

How to install Robolinux Mate series 14



Please follow these simple instructions carefully!

Backup all of your important existing data on your machine. Most PC Users have a backup, make sure you do this before you proceed!

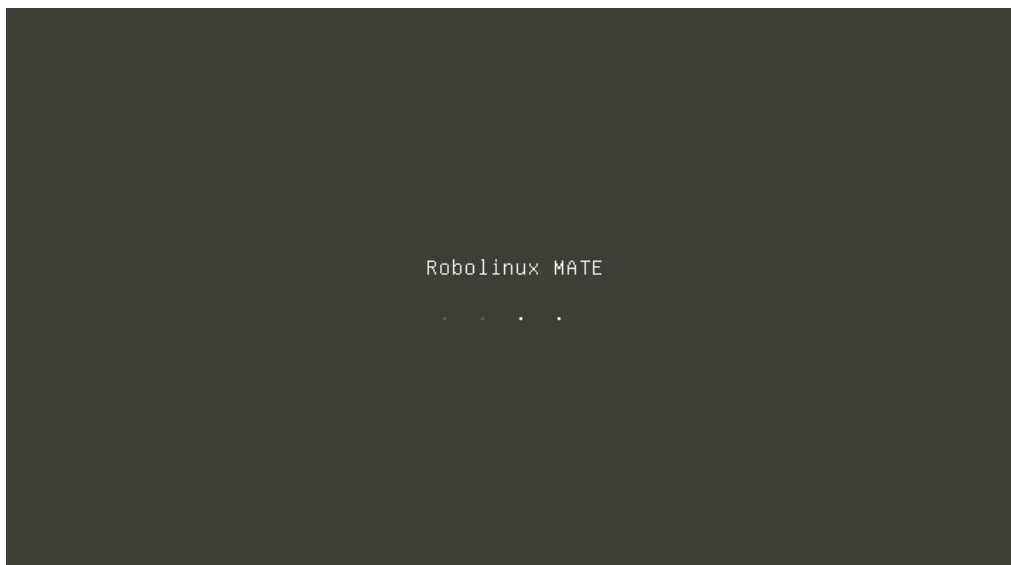
Download the Robolinux series 14 iso file to your PC or laptop.

Burn the Robolinux.iso you downloaded onto a DVD or USB Stick.

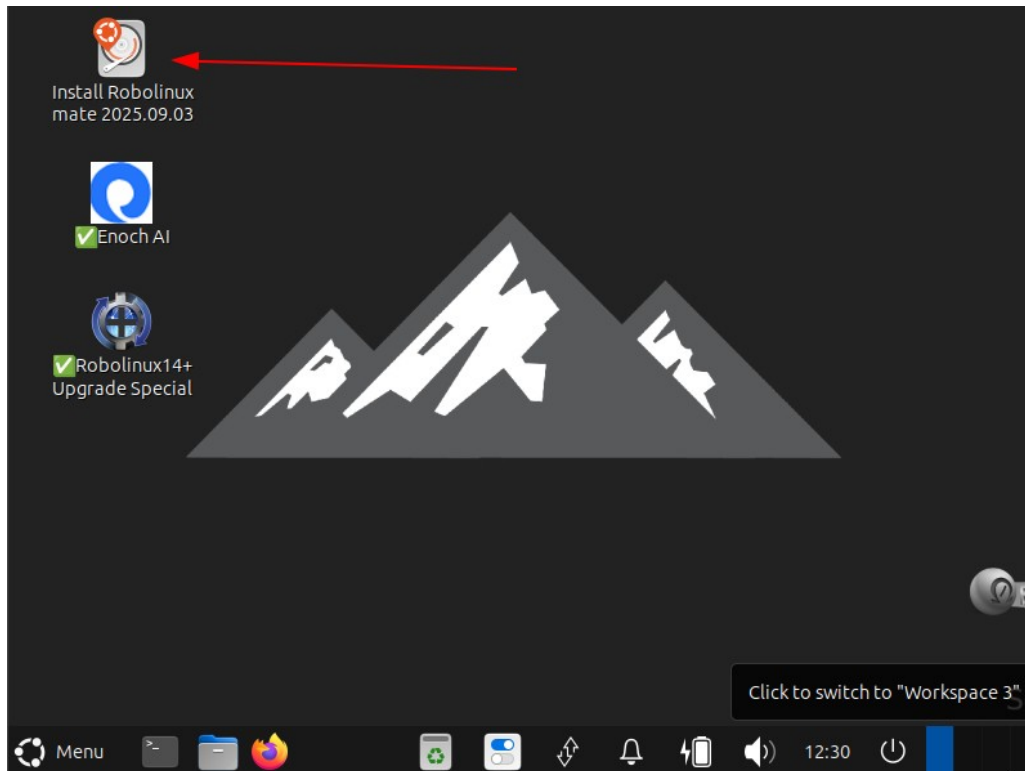
In almost all cases Robolinux will find your Wifi driver. If not then be sure you are plugged into the internet with an ethernet cable on your router, otherwise your installation will fail to use the network mirrors and you will not be able to install any drivers or software.

Robolinux series 14 versions only SUPPORT SECURE BOOT UEFI

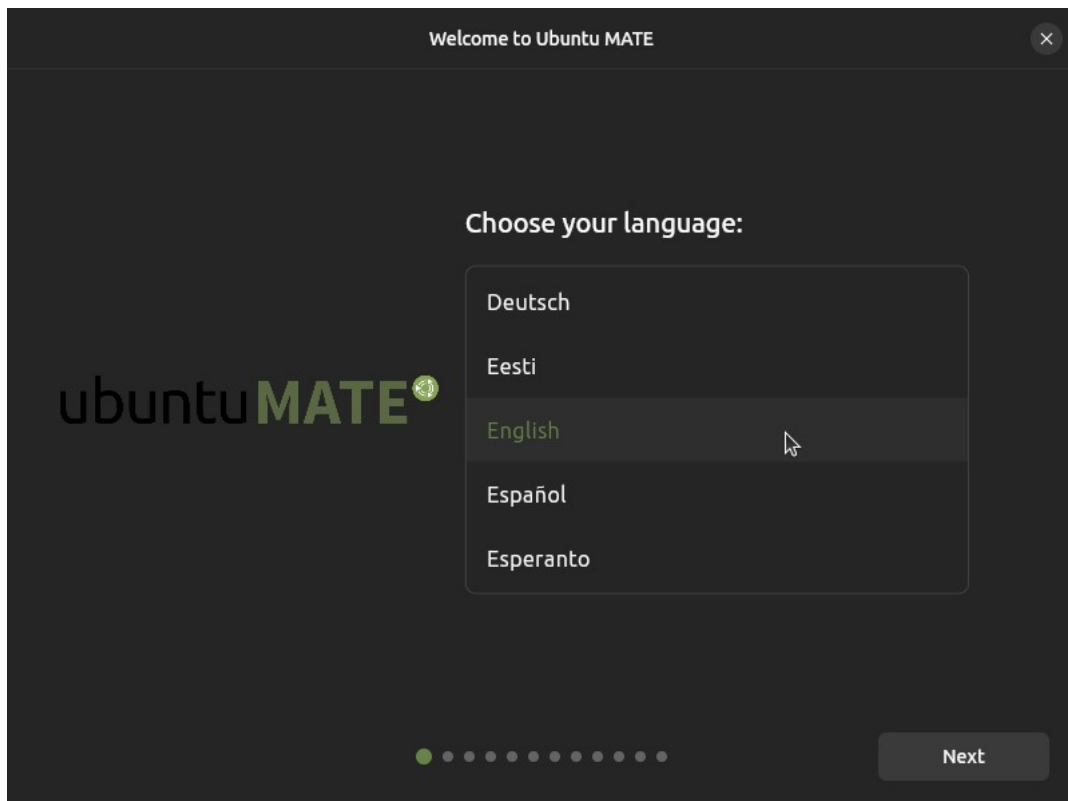
After you have booted your PC or laptop it will load a grub Try or install screen or it will automatically load this screen:

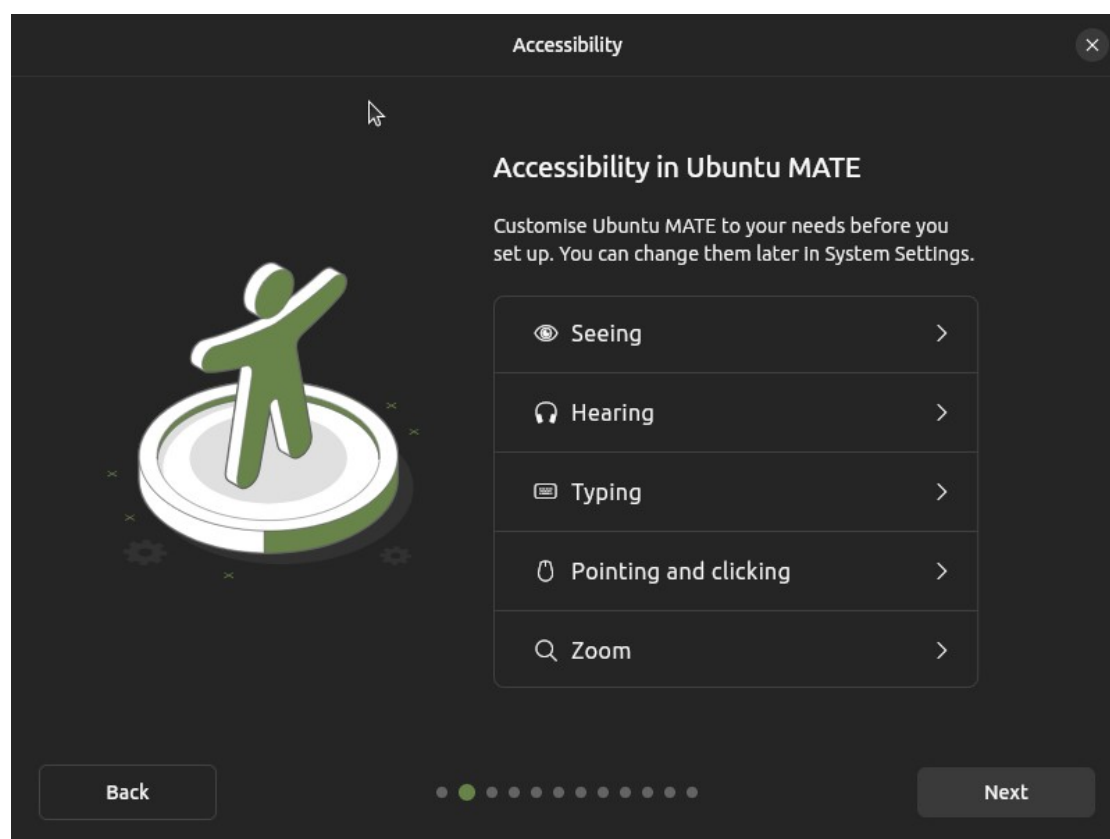


Then you can install Robolinux by clicking on the "Install Robolinux 14" installer icon at the top left of the screen.

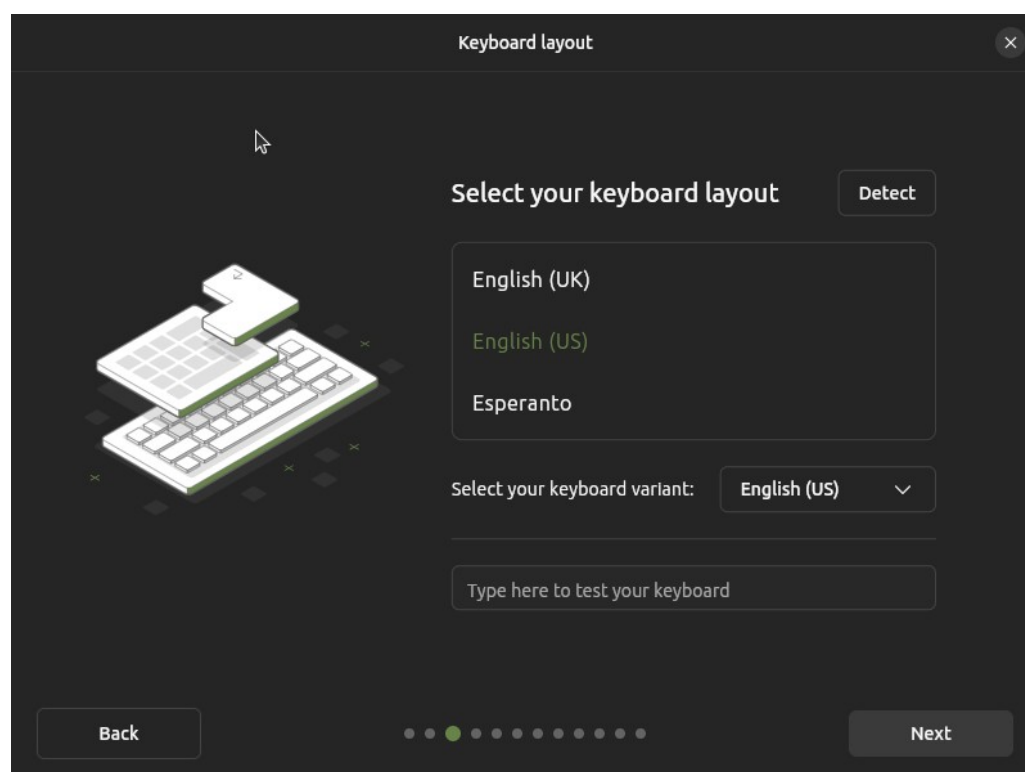


Select your language

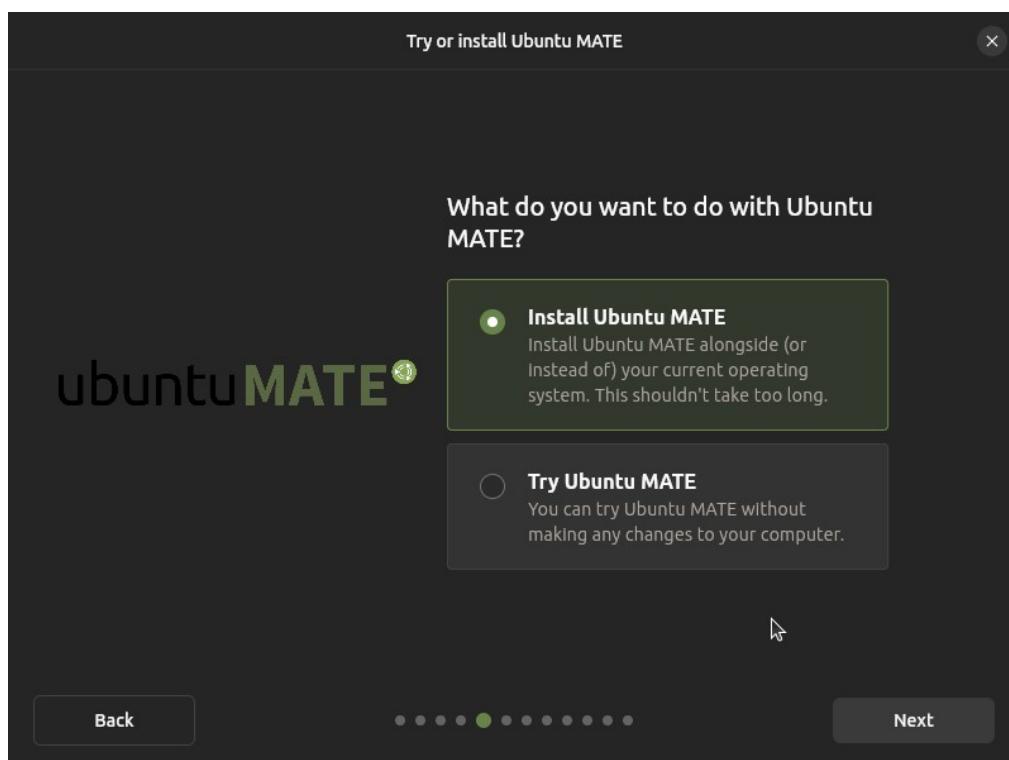
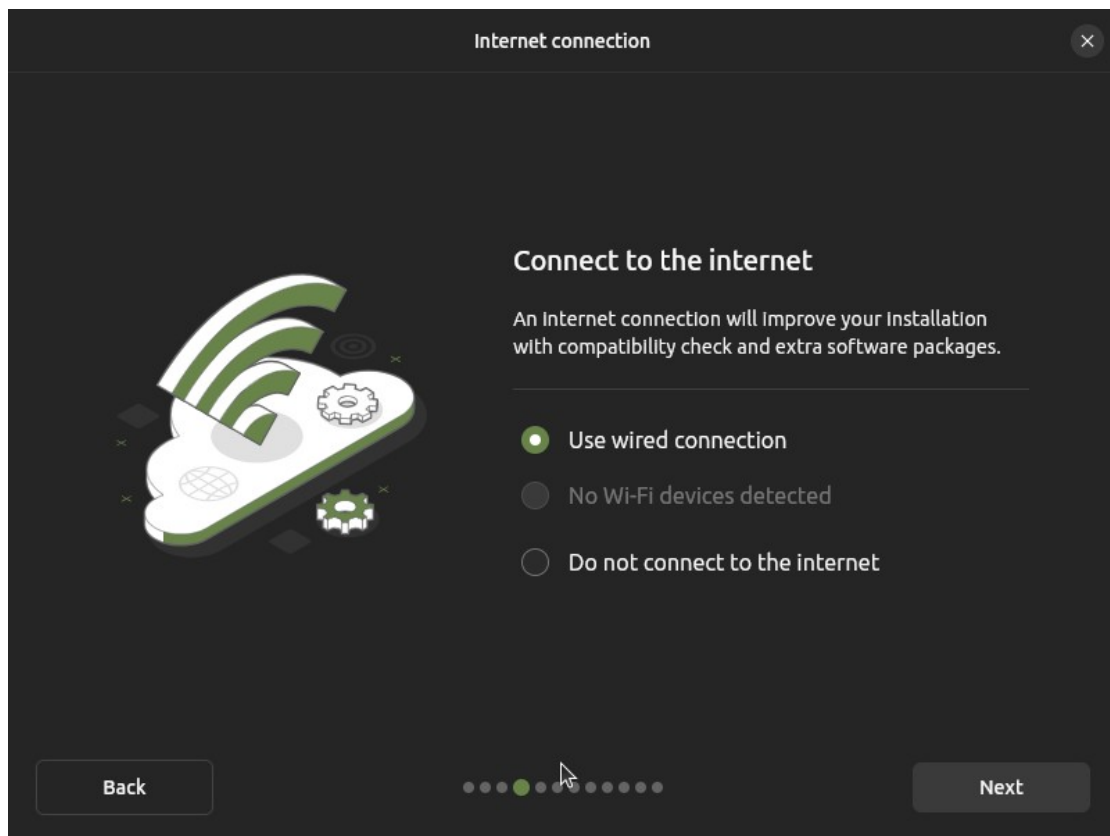


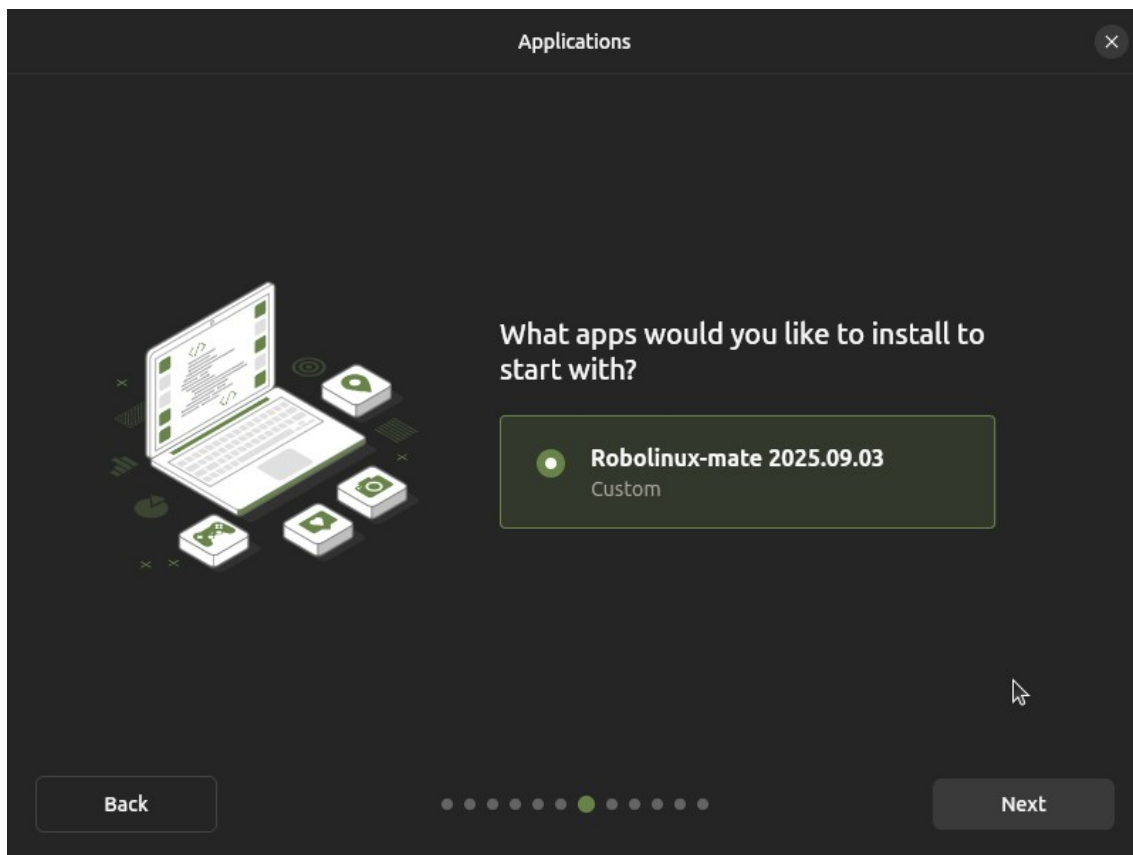


Select your keyboard

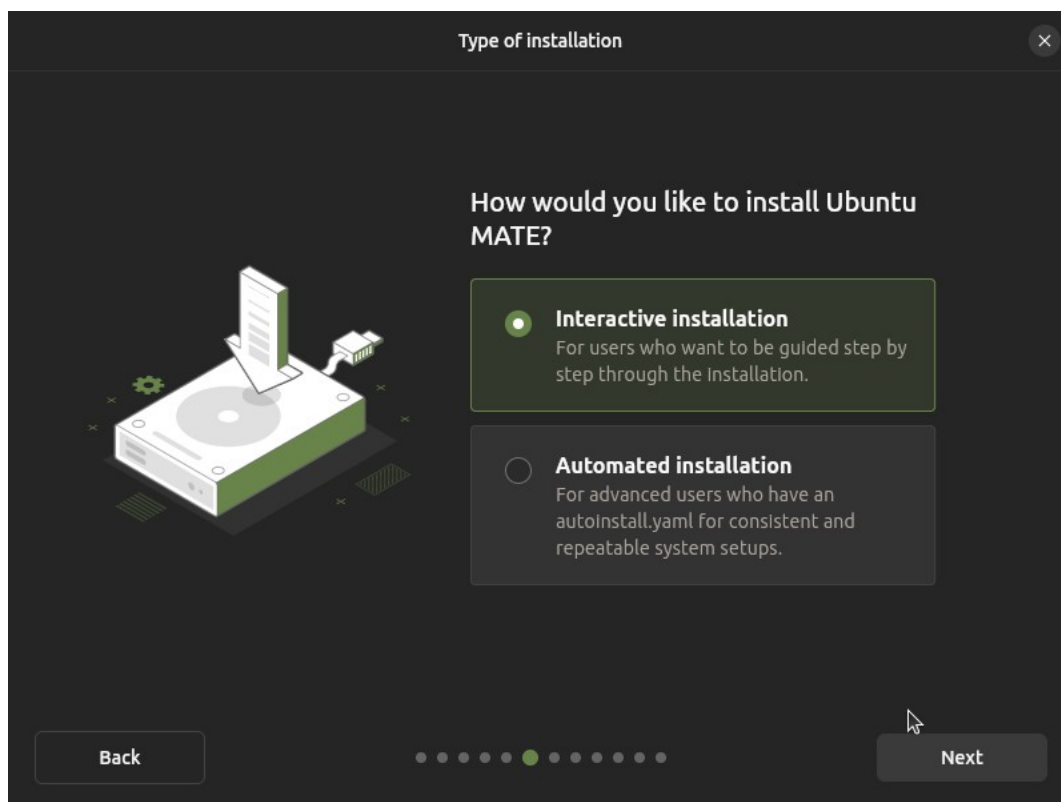


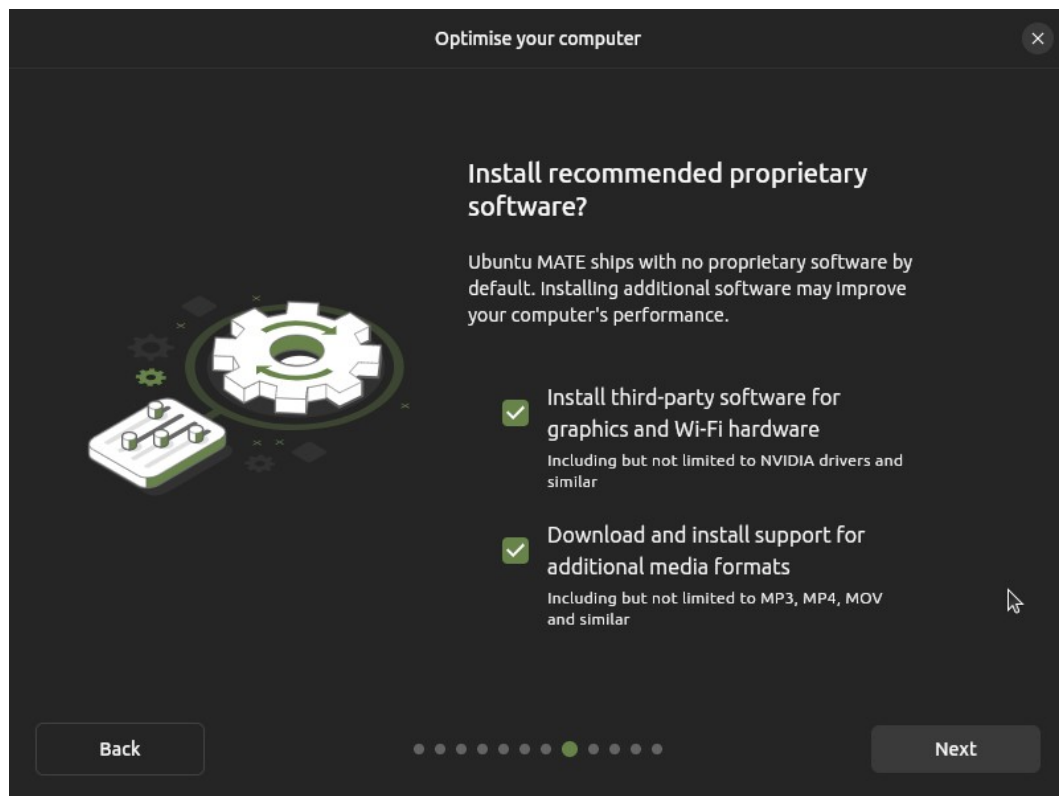
Select ethernet or wireless connection



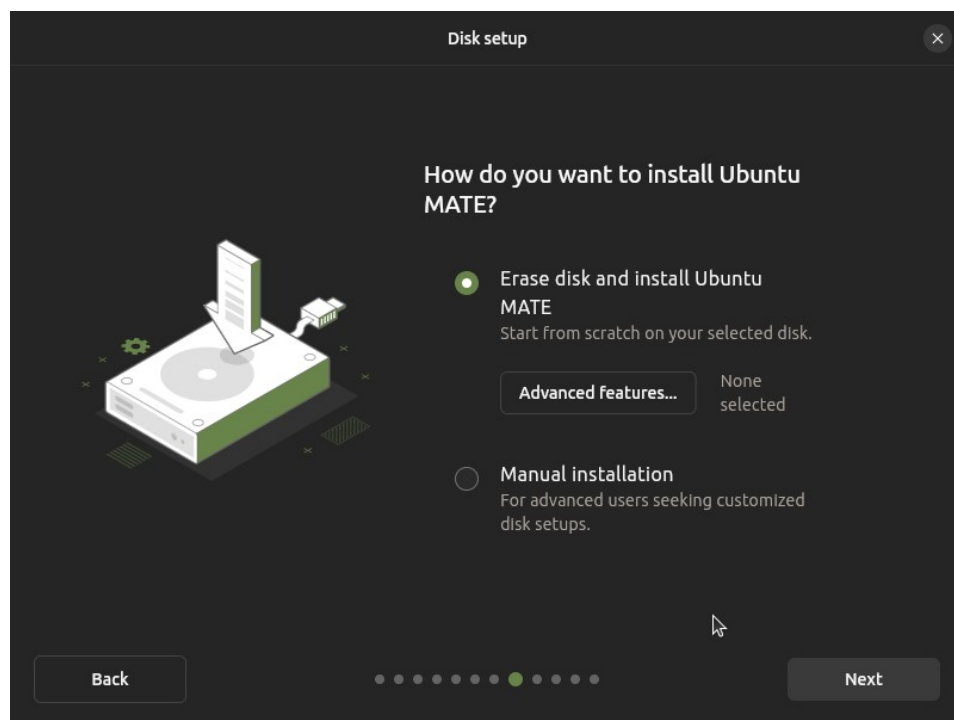


Select whichever option you prefer. Interactive installation is recommended
Press next to continue.





Erase disk to only install Robolinux on your hard drive or select manual installation for setting up a dual boot system



Enter your host name and account information

Create your account

Create your account

Your name

John Martinson

✓

Your computer's name

zenbook

✓

Your username

zenrobo

✓

Password

.....

Show

Fair password

Confirm password

.....

✓

✓

Require my password to log in

☐

Use Active Directory

Back

.....

Next

Select your country

Select your timezone

Location

New York City

Timezone

America/New York

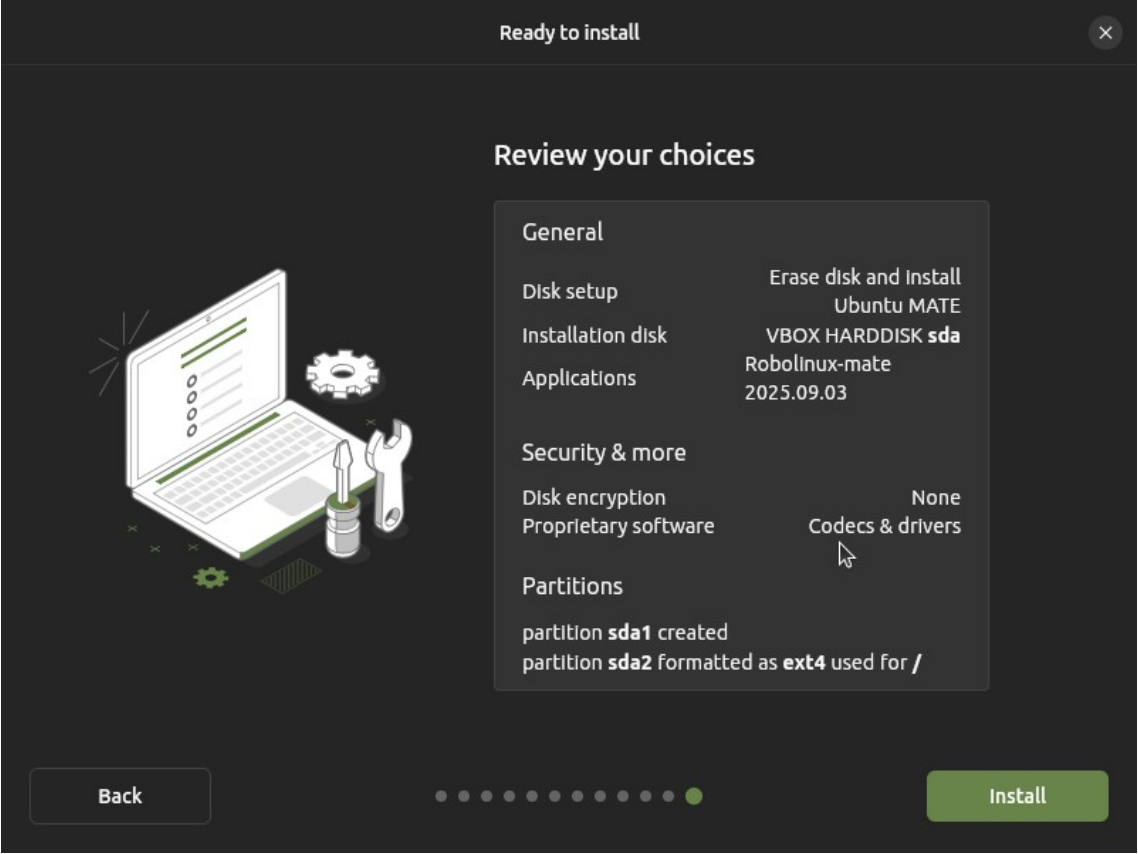


Back

.....

Next

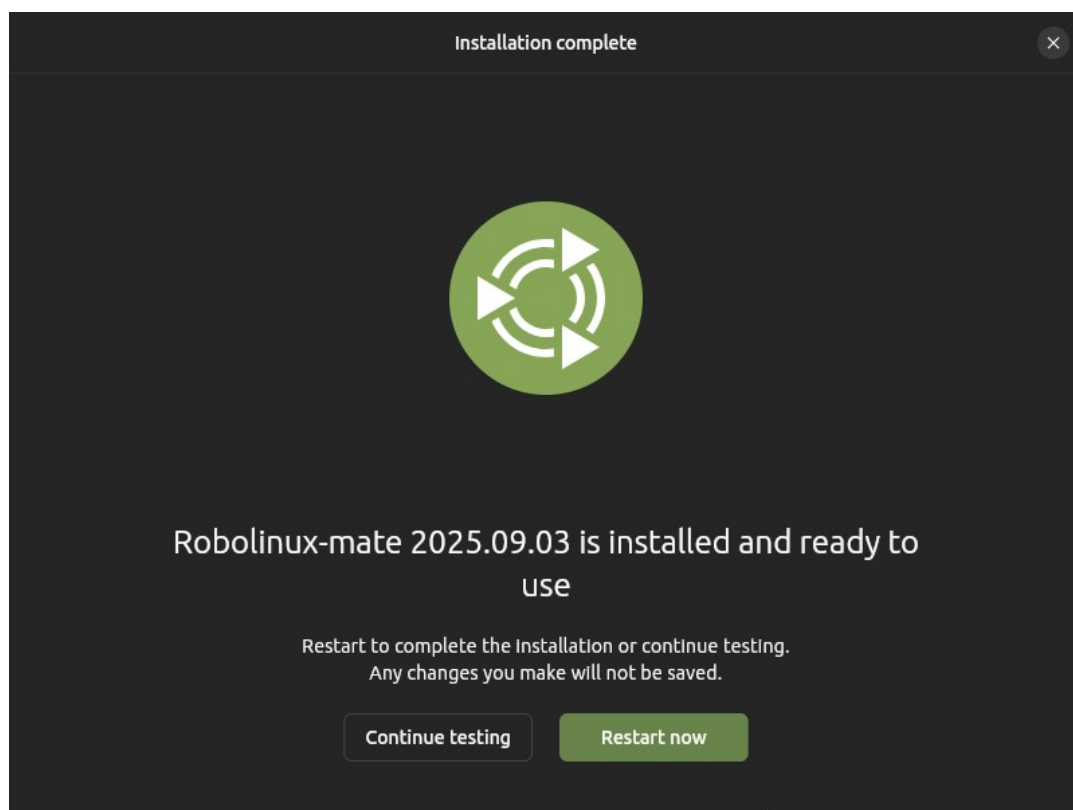
Press install



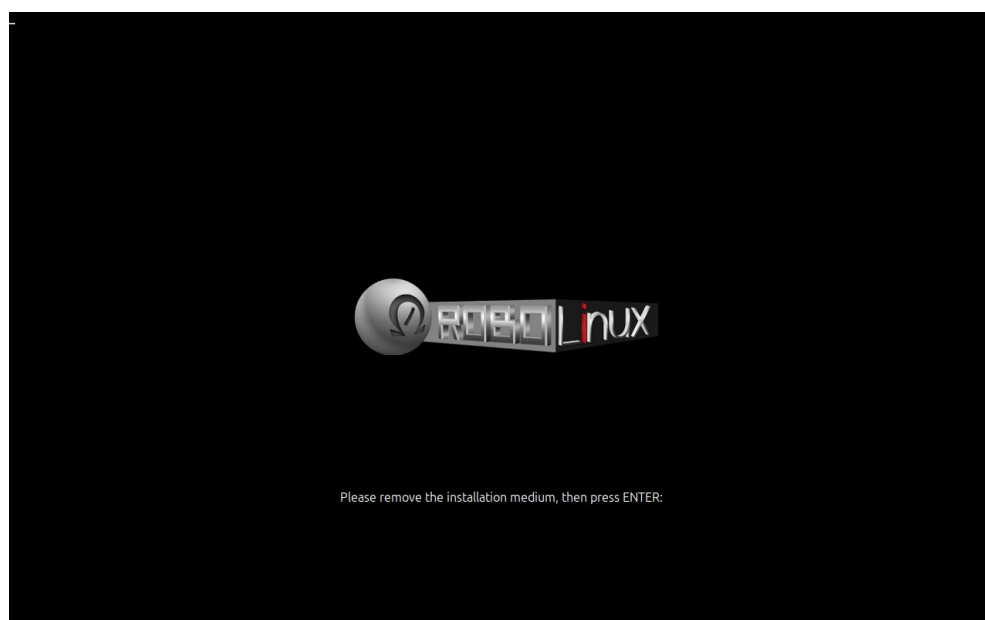
Installing Robolinux



Press Restart now



Remove your USB or CD ROM and press enter to reboot



Login screen



Welcome to Robolinux Mate Series 14!
Enjoy the freedom of NEVER being TRACKED again in your life!

