

How to set up a dual boot Windows system in Robolinux Xfce series 12



Please follow these simple dual boot instructions carefully!

1. Backup

Make sure you have a backup of your existing data on your Windows machine. Most PC Users have a backup, if you don't then make a backup before you proceed!

2. CRITICAL! Defrag your Windows disk drive

Before you can set up a dual boot windows installation you need to defragment your Windows hard drive. This is a necessity thanks to the ancient Microsoft le system inside every Windows version which is 1980's DOS. If you do not defrag the disk drive then you will not have any real free space to install a 2nd operating system such as Robolinux. The fact is that all Windows versions carelessly spray your data into a sloppy mess all over your disk drive continuously. This is one of the many reasons why Windows runs so slowly. You also have to defrag your Windows hard disk regularly in order to get halfway reasonable read write speeds. So this is something you should be used to doing.

When you have finished defragging your Windows drive then you can start the Robolinux installer.

3. Download the correct Robolinux series R12 iso file to your PC or laptop.

4. Burn the Robolinux.iso you downloaded onto a DVD or USB Stick.

In almost all cases Robolinux will find your Wifi driver. If not then be sure you are plugged into the internet with an ethernet cable on your router, otherwise your installation will fail to use the network mirrors and you will not be able to install any drivers or software.

All Robolinux series 12.05 & above versions SUPPORT UEFI & Legacy BIOS

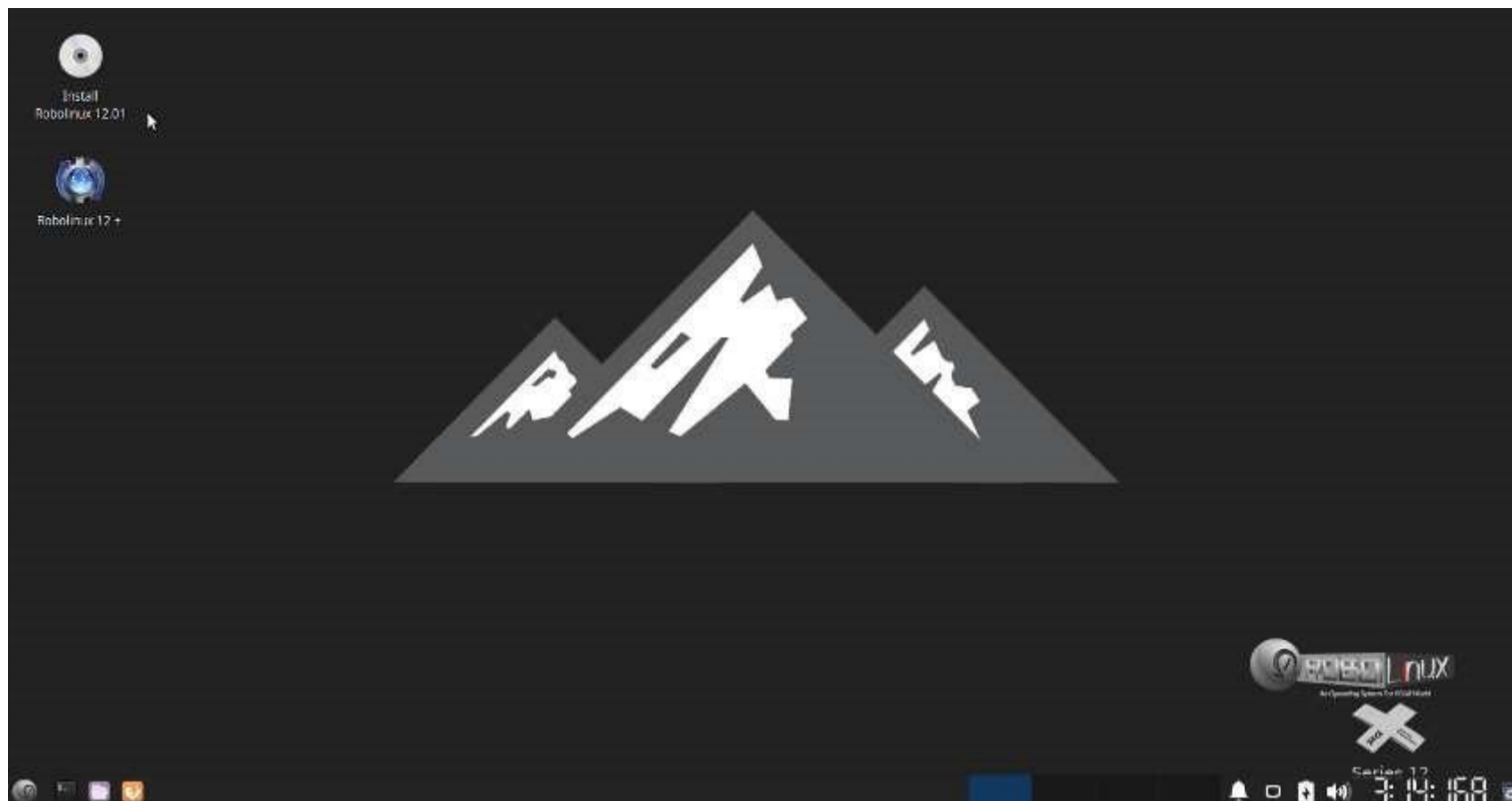
For the Legacy Bios iso you must turn off Secure Boot in your BIOS and set your BIOS to boot off of either a **NON UEFI DVD** or a **NON UEFI USB** depending on which one you are using to install Robolinux. Once you have done this, then you can insert your Robolinux64-cinnamon-v12.01.iso DVD or USB stick into your PC or laptop and reboot it.

After you have booted your PC or laptop it will automatically load this blue legacy bios Robolinux Live boot menu screen below or the black screen that says "Robolinux Live with Installer" which works with UEFI. only.

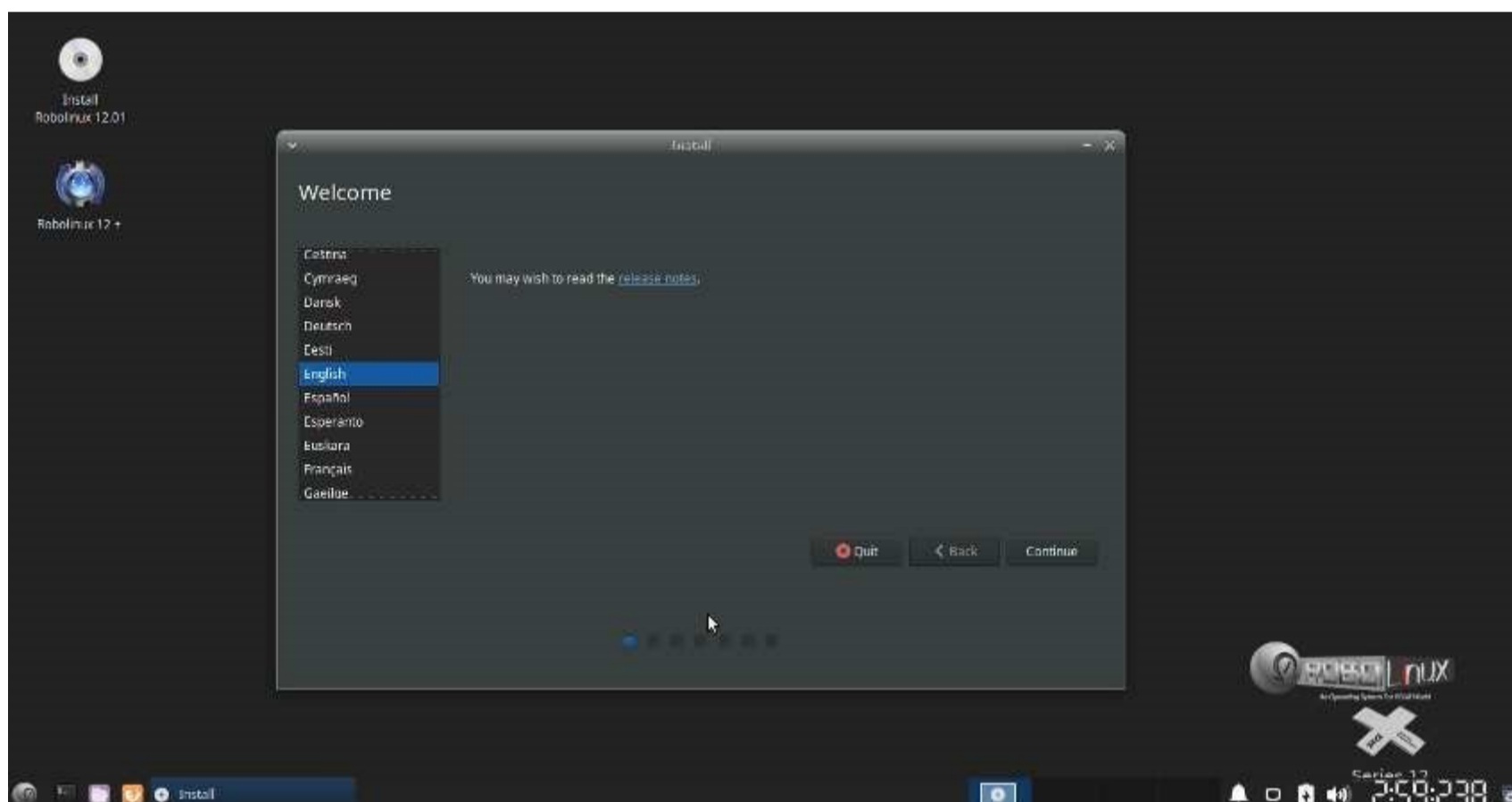
DVD & USB WARNING! If you see any other screen when you boot up the Robolinux legacy bios iso using a DVD or USB device that means your install will fail and it will NOT boot from Grub!



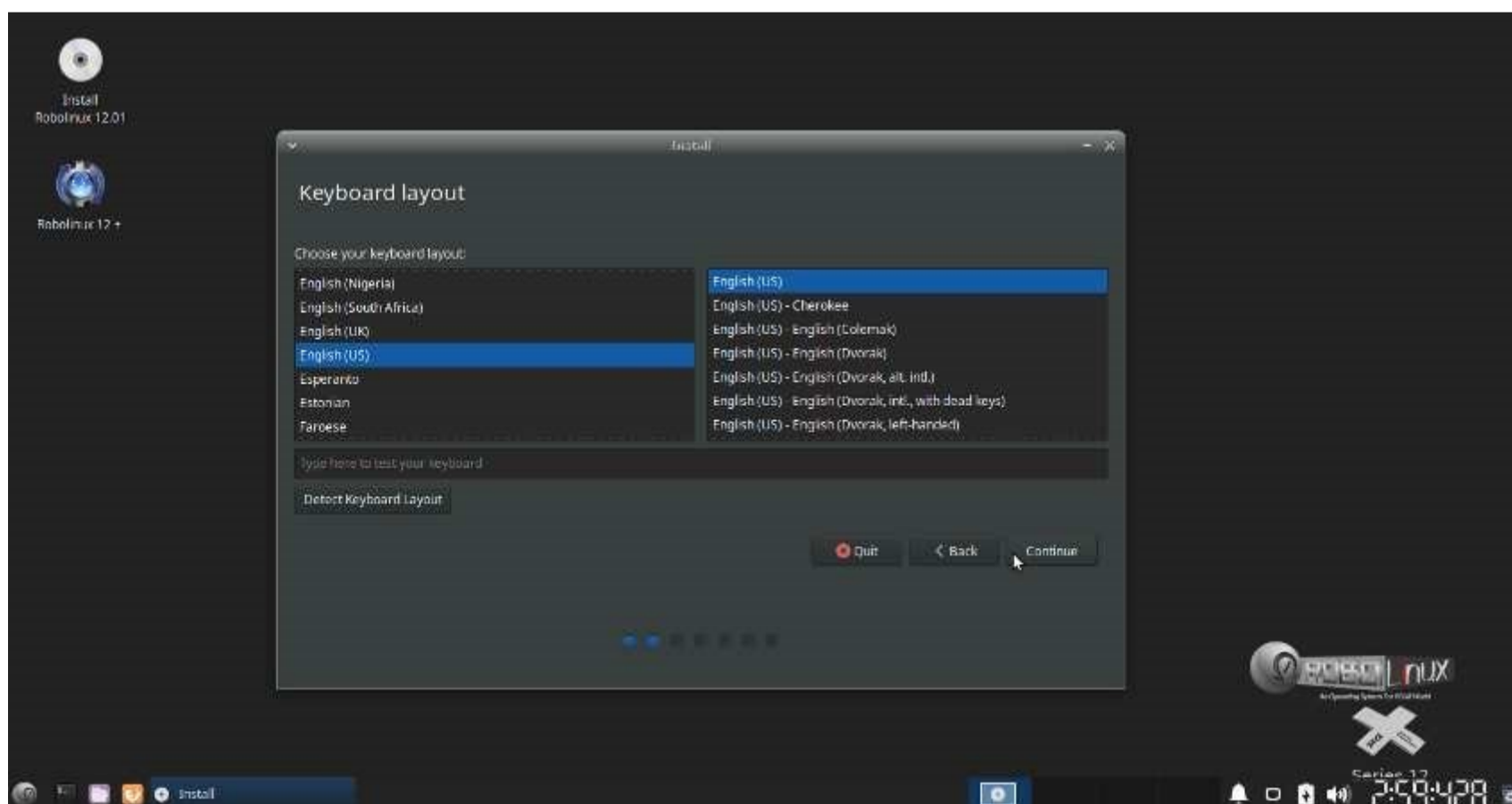
Then you can install Robolinux by clicking on the "Install Robolinux 12" installer icon at the top left of the screen.



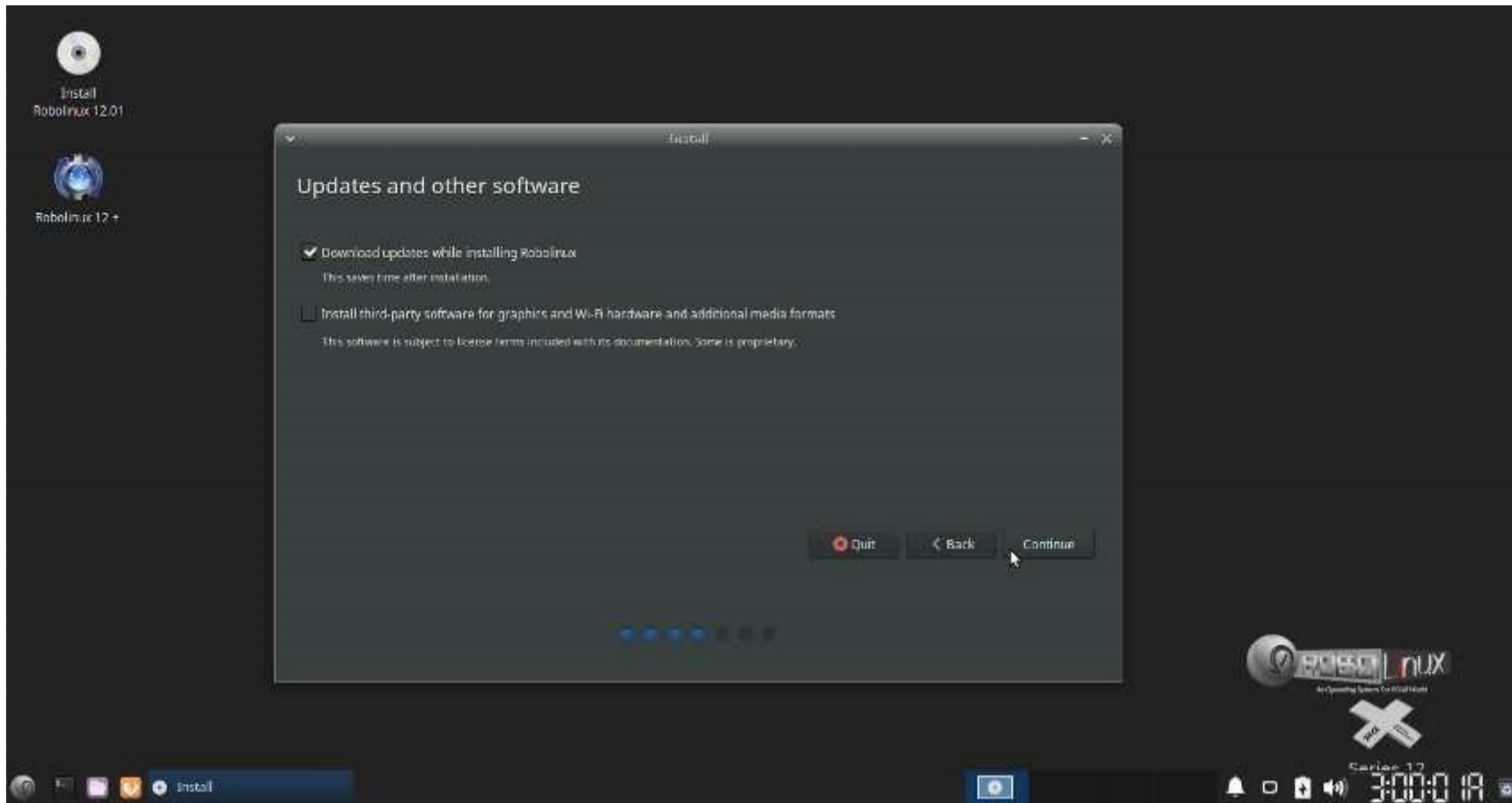
Select your language and click on continue.



Select your keyboard layout and click on the continue button

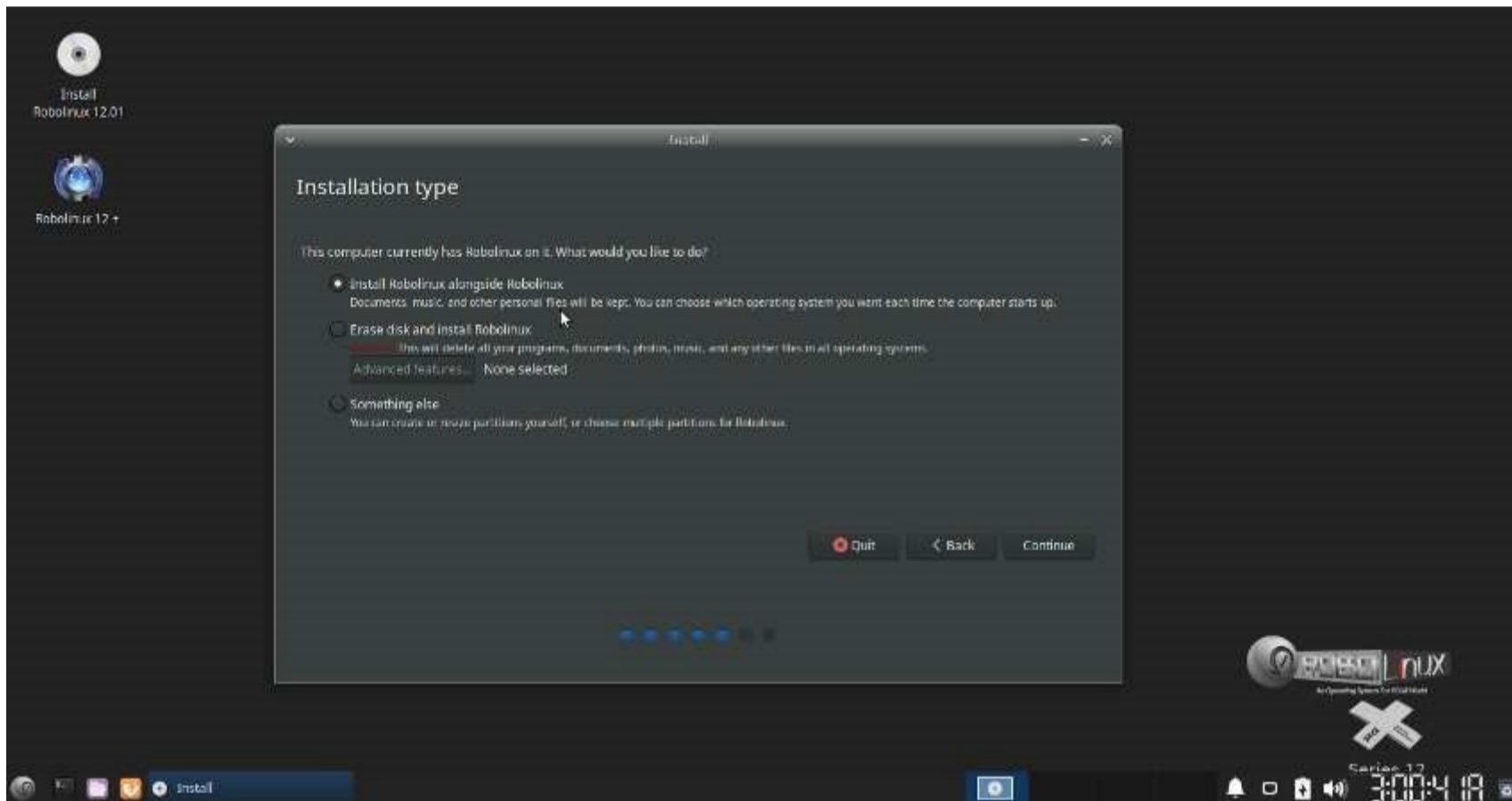


Please note that it is not necessary to select "Install 3rd-party software" as the Robolinux OS already has them in the iso le.



Please note: Normally the actual other operating system is Windows 7 or 10. This is a simulation done using Oracle VirtualBox which FAILS to allow you to install a dual boot Linux - Windows system.

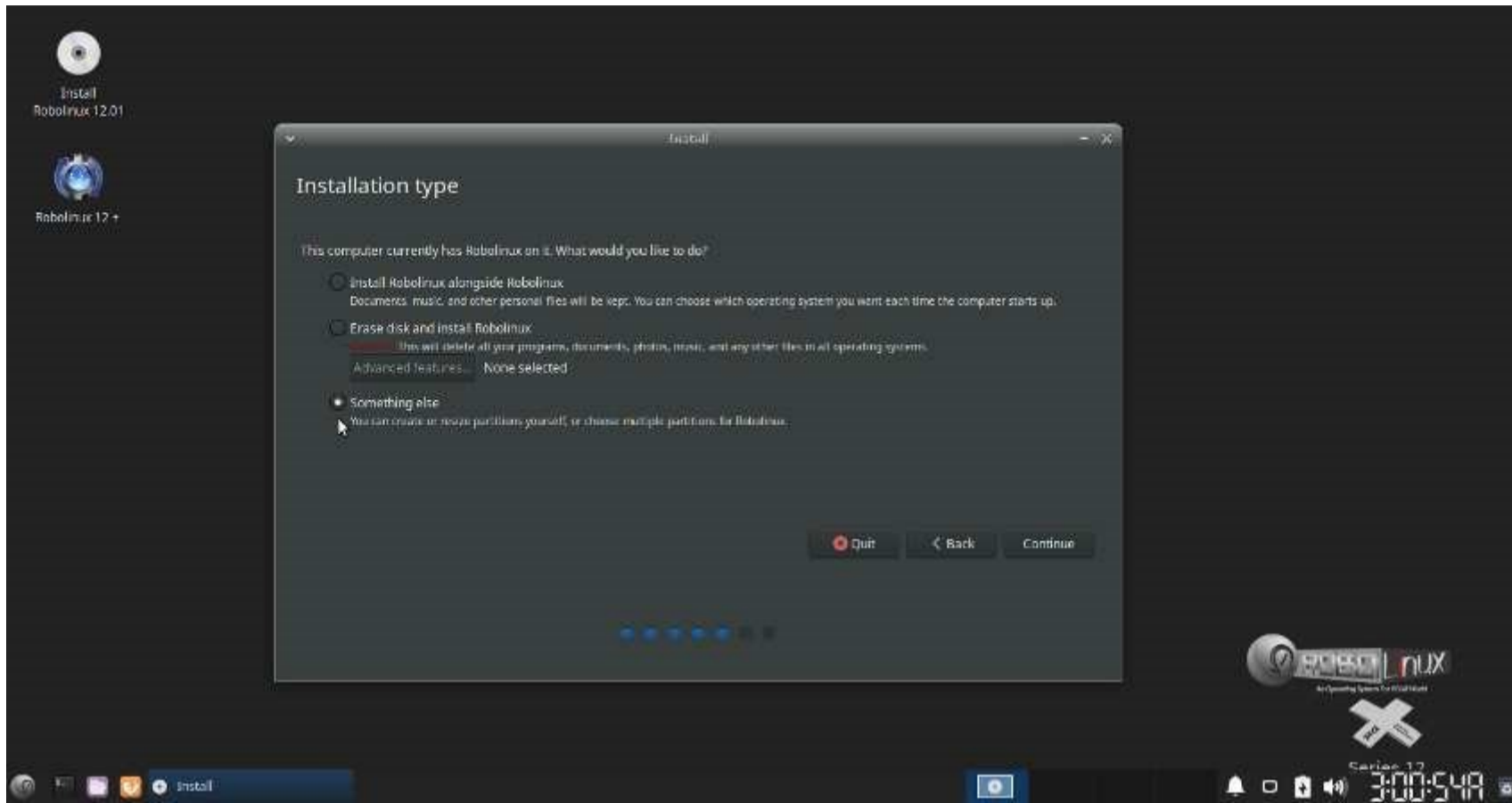
You can select "Installing Robolinux alongside your other Operating System" which is normally a Windows OS if you have already resized your existing partition, otherwise there will be no space to install Robolinux as the second partition on your disk drive. If that is the case then please see the next screen below before you proceed.



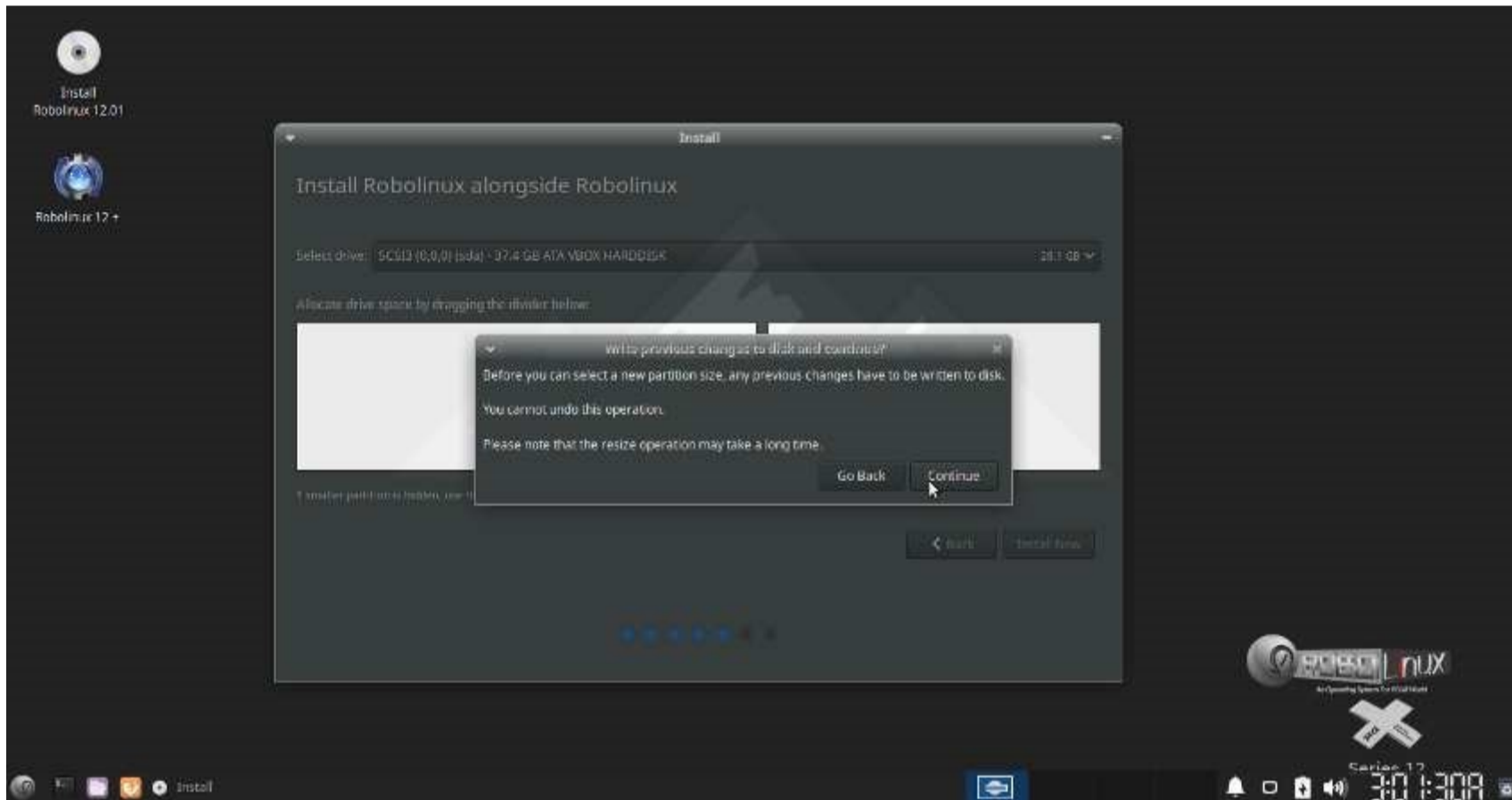
IMPORTANT WARNING!

If you select the "Something else" option on the screen below you can resize the existing partition. However since the Robolinux installer is using the Ubuntu Ubiquity Installer software which has been known to be unreliable, we highly recommend you abort the dual boot installation and use a disk partitioner such as GParted rst. Or if your existing partition is a Windows partition then use the Windows partitioner rst.

When you have resized your existing partition successfully then you will be ready to install a dual boot Robolinux system on your hard disk.



Click continue and your dual boot system will be installed.



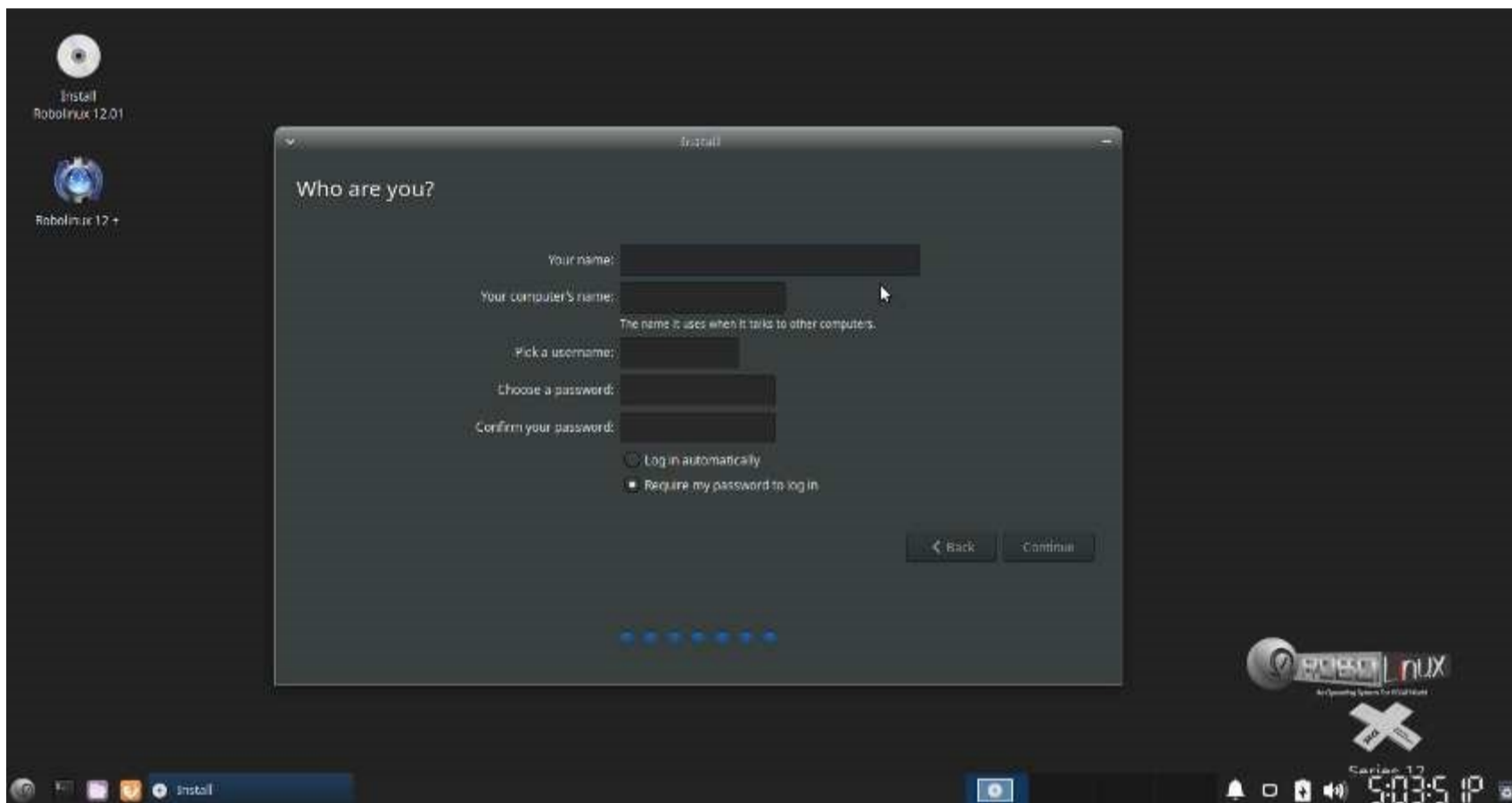
Select your time zone by clicking on the country and city and press the continue button.



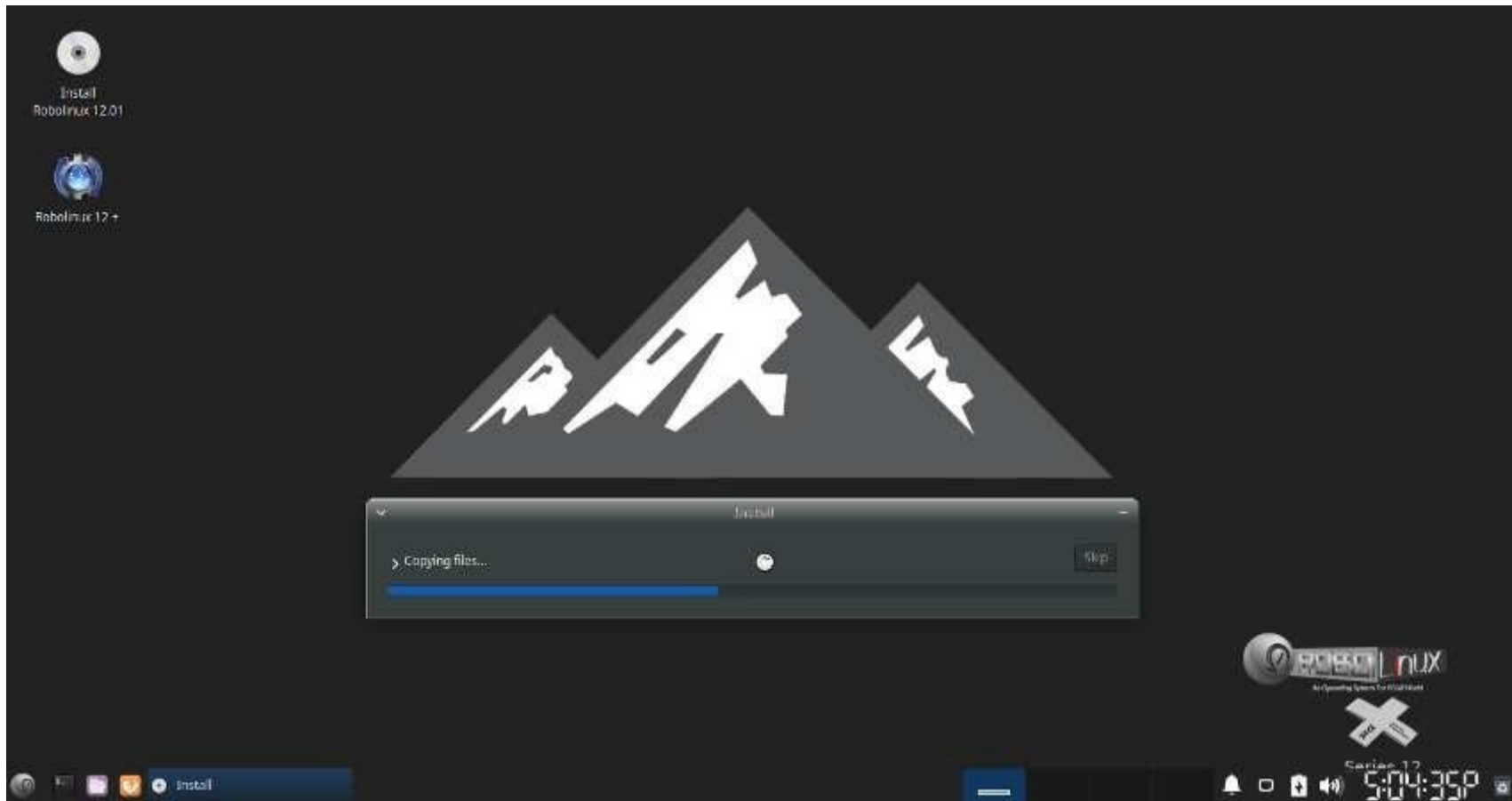
Enter your pertinent information and your password. When you are finished click on Continue.

Be certain to remember or write down your password for future reference.

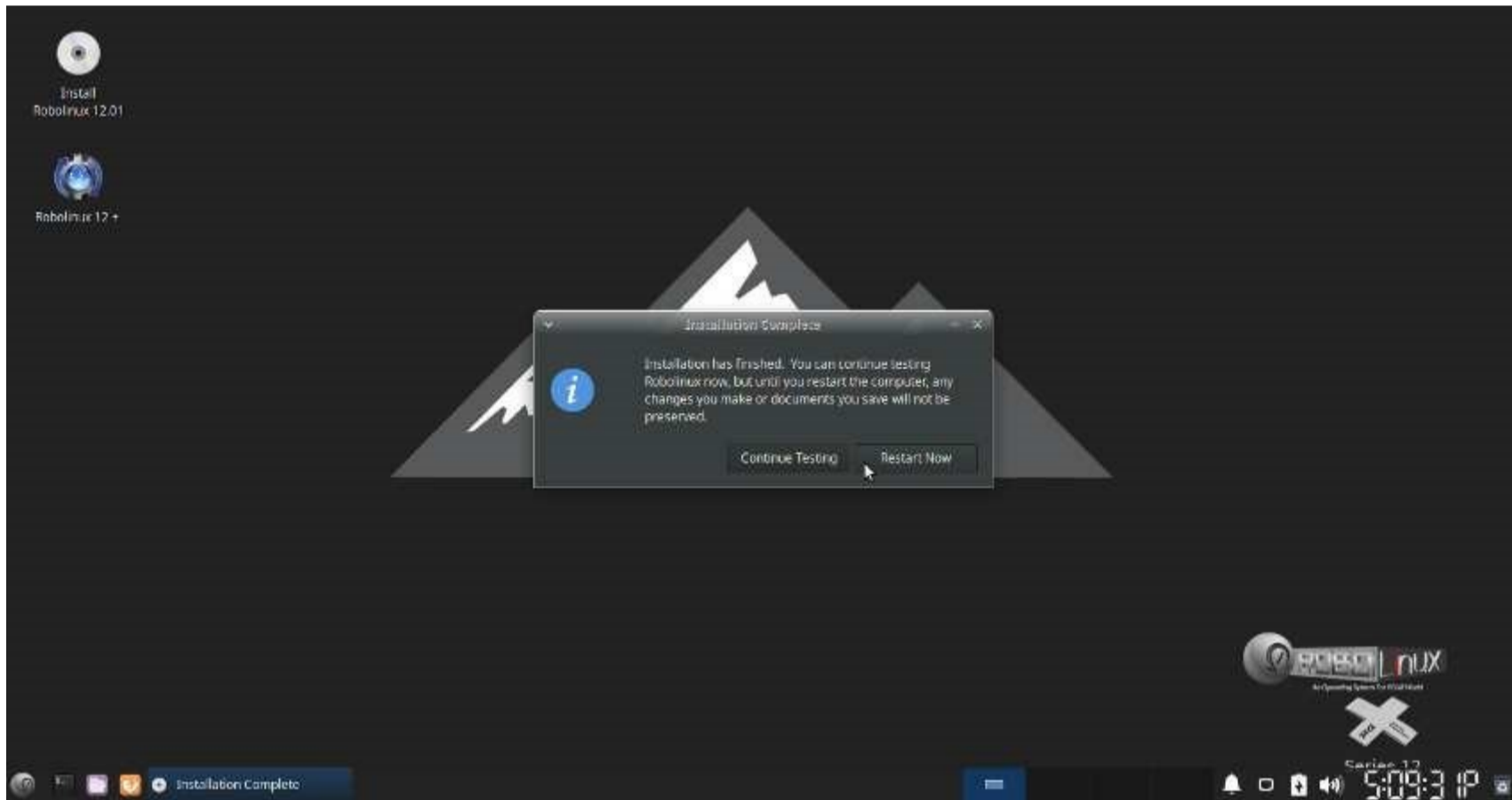
This will also be your super user password "sudo" for Administrative access.



Robolinux is now installing. This process is quite fast. Normally just a few minutes.



Congratulations! Robolinux is now fully installed. It is time to restart your computer.



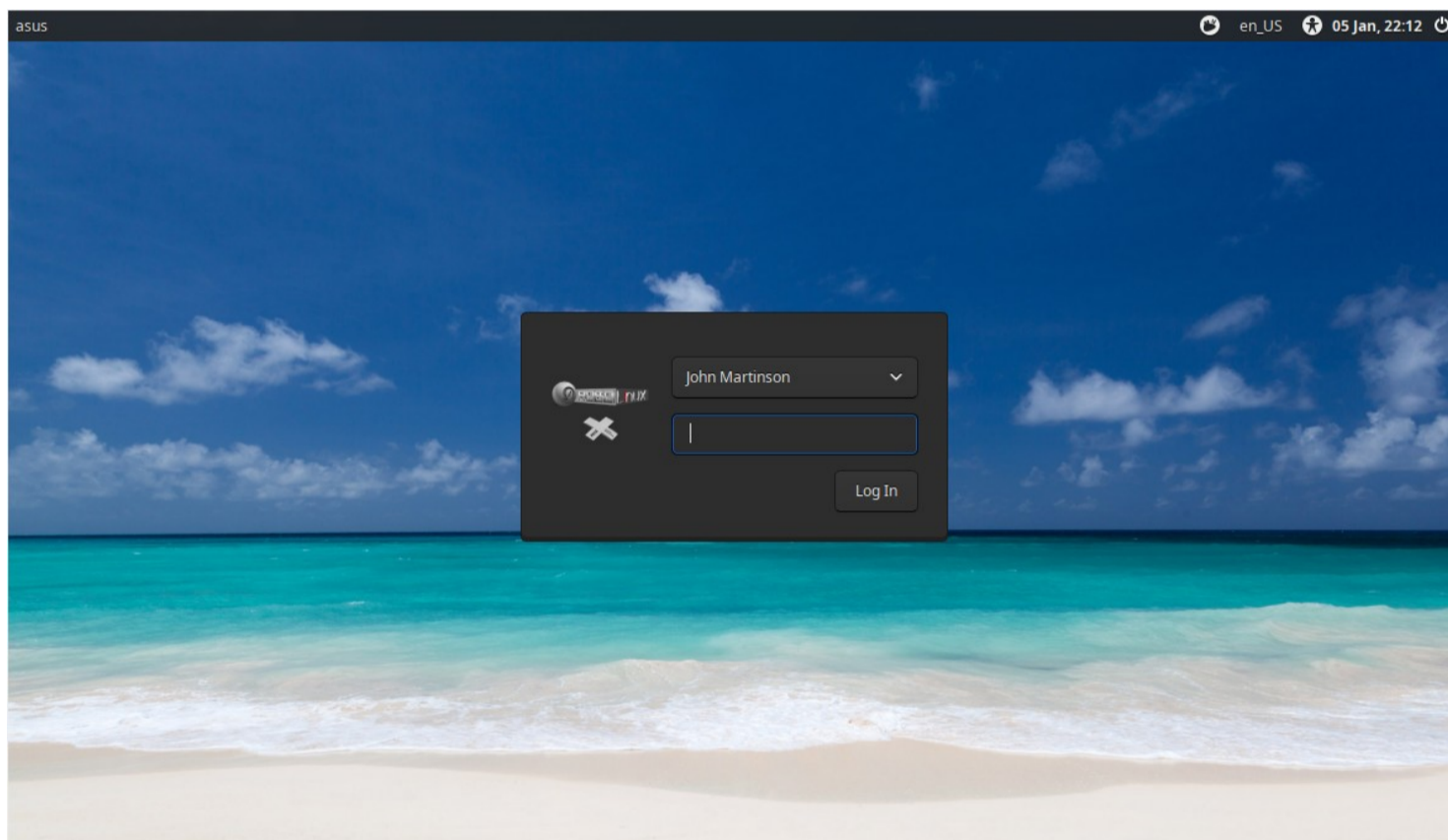
Please remove your DVD or USB stick and press enter.



Below is the Robolinux Grub boot screen for a non UEFI system or with multiple partitions on the hard disk.



Here is the Robolinux User Login screen. If you want to change this login screen then simply use the "Login Window" found at the very bottom of the Settings options in the Xfce control center.



Welcome to Robolinux Xfce Series 12!

Enjoy the freedom of NEVER being TRACKED again in your life!

