

How to install Robolinux Mate series 12



Please follow these simple instructions carefully!

Backup all of your important existing data on your machine. Most PC Users have a backup, make sure you do this before you proceed!

Download the correct Robolinux series R12 iso file to your PC or laptop.

Burn the Robolinux.iso you downloaded onto a DVD or USB Stick.

In almost all cases Robolinux will find your Wifi driver. If not then be sure you are plugged into the internet with an ethernet cable on your router, otherwise your installation will fail to use the network mirrors and you will not be able to install any drivers or software.

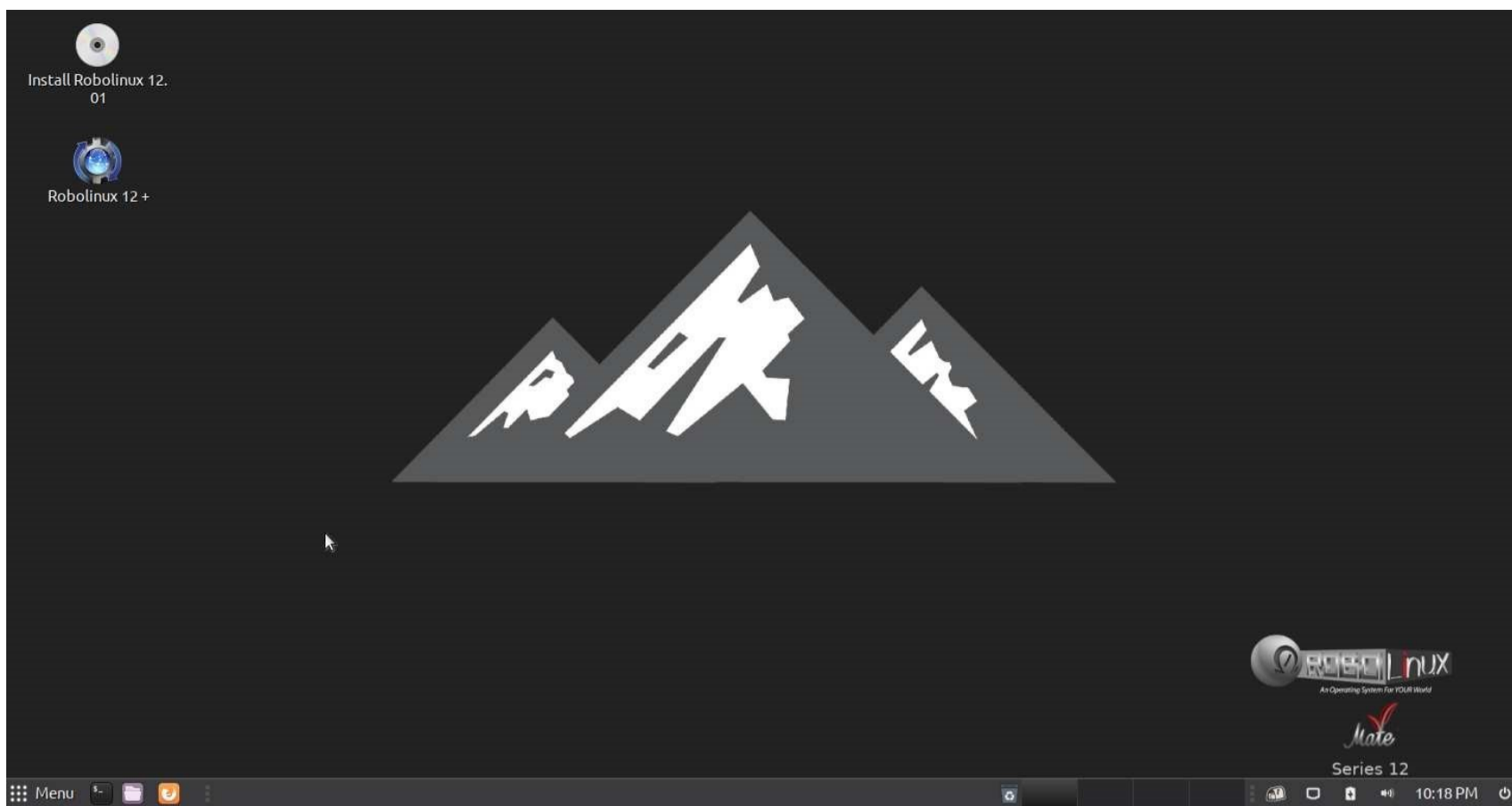
All Robolinux series 12.05 & above versions SUPPORT UEFI & Legacy BIOS

For the Legacy Bios iso you must turn off Secure Boot in your BIOS and set your BIOS to boot off of either a NON UEFI DVD or a NON UEFI USB depending on which one you are using to install Robolinux. Once you have done this, then you can insert your Robolinux64-cinnamon-v12.01.iso DVD or USB stick into your PC or laptop and reboot it.

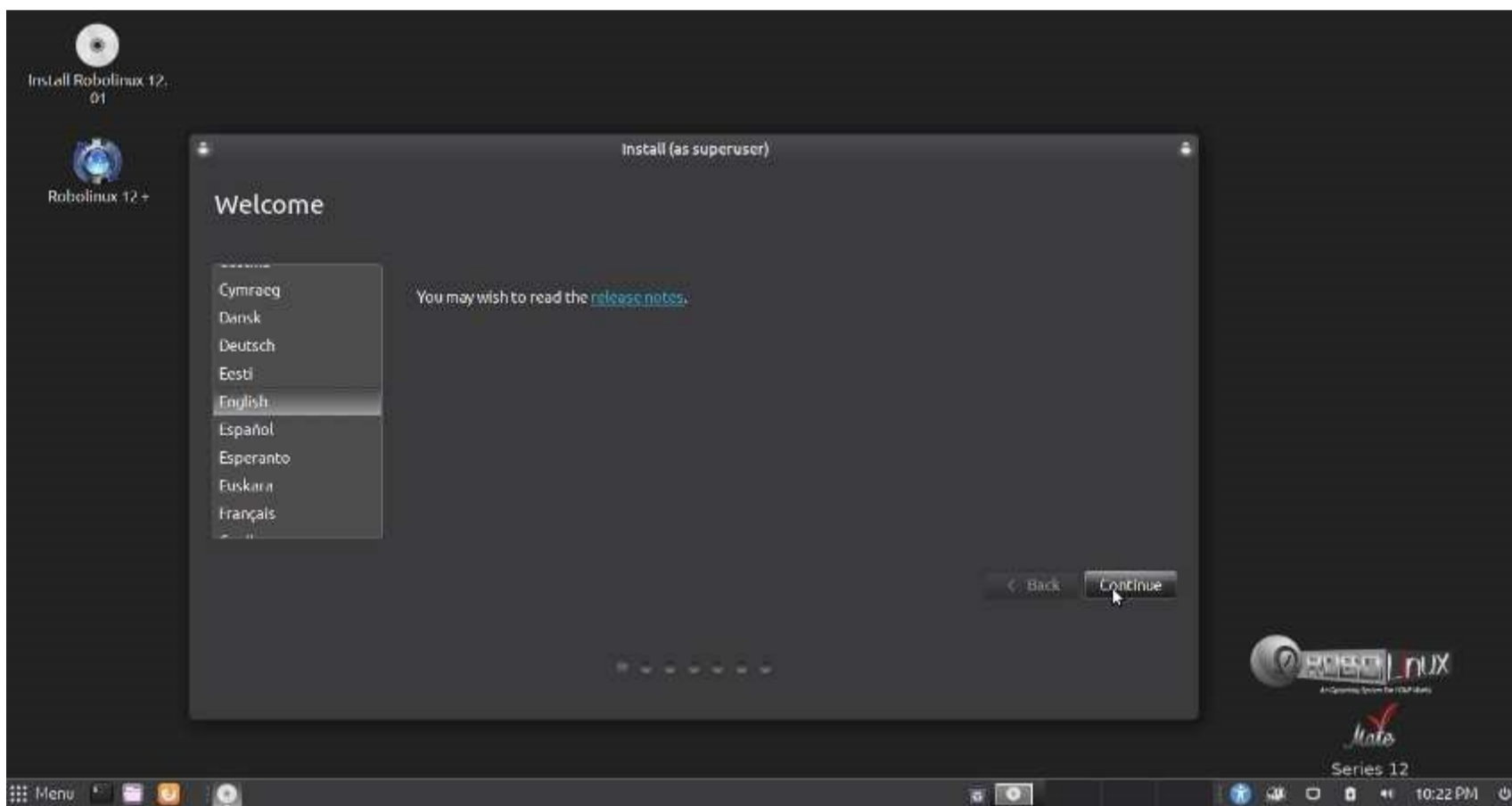
After you have booted your PC or laptop it will automatically load this blue legacy bios Robolinux Live boot menu screen below or the black screen that says "Robolinux Live with Installer" which works with UEFI. only.

DVD & USB WARNING! If you see any other screen when you boot up the Robolinux legacy bios iso using a DVD or USB device that means your install will fail and it will NOT boot from Grub!

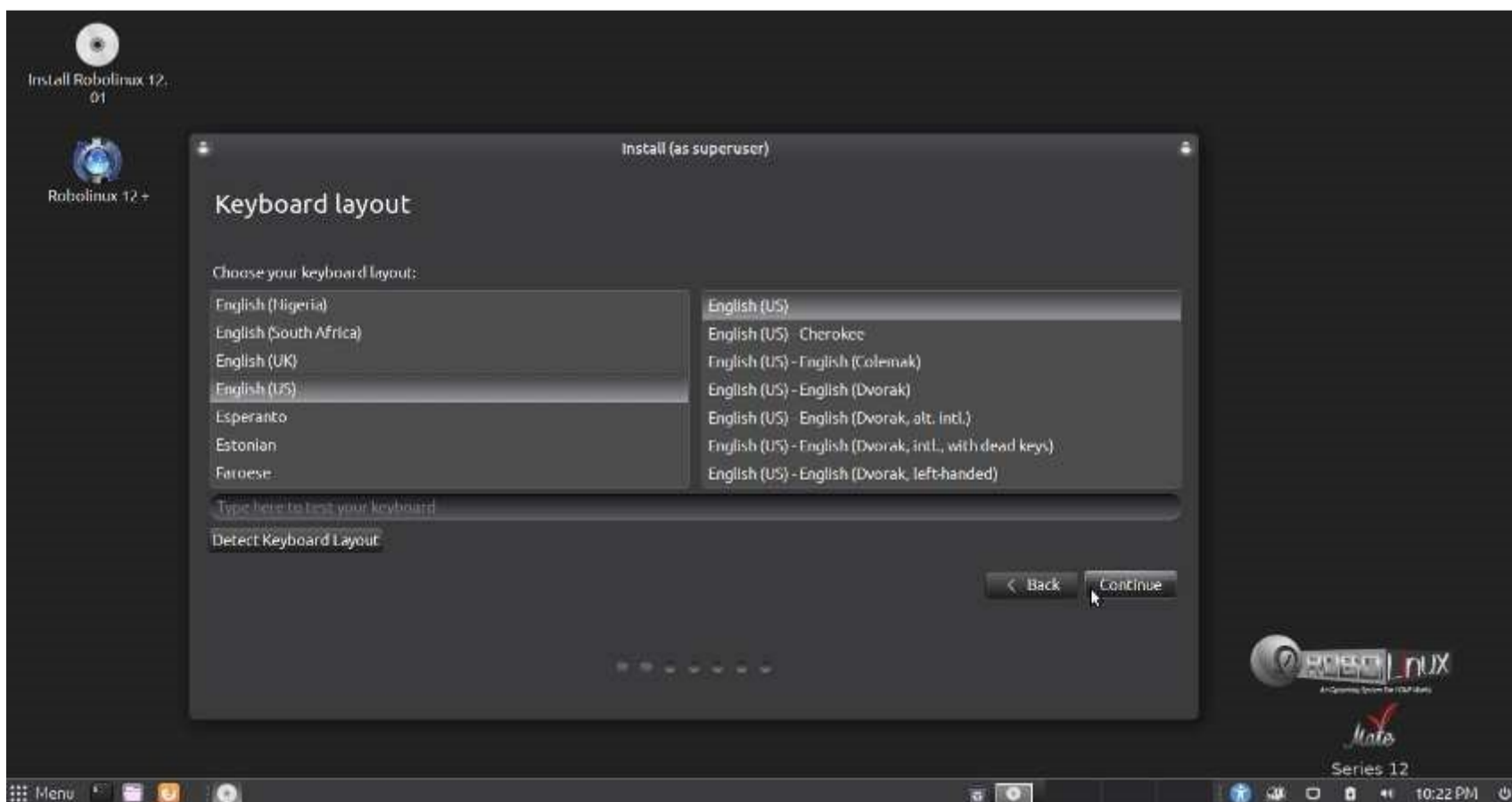




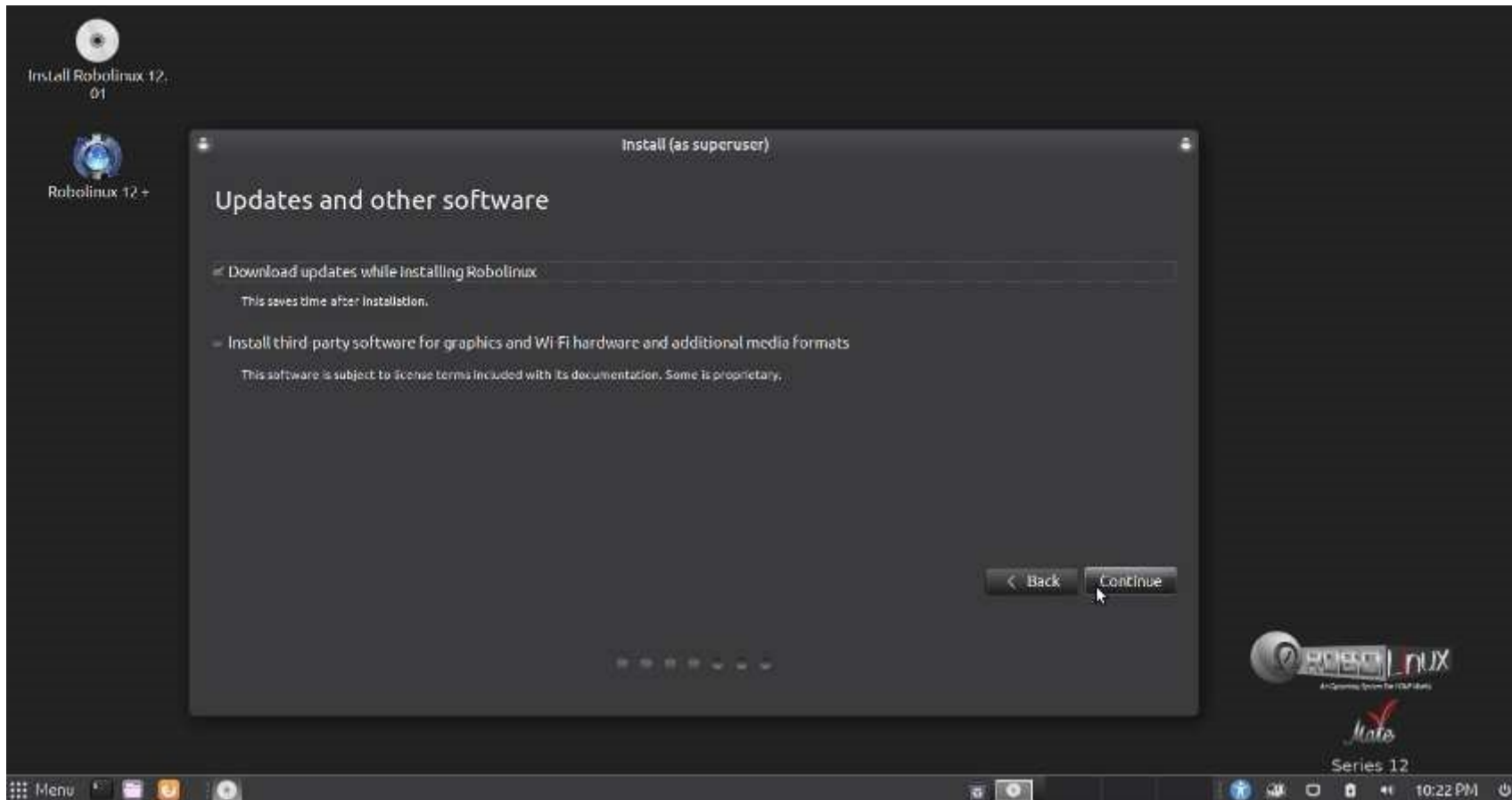
Select your language and click on continue.



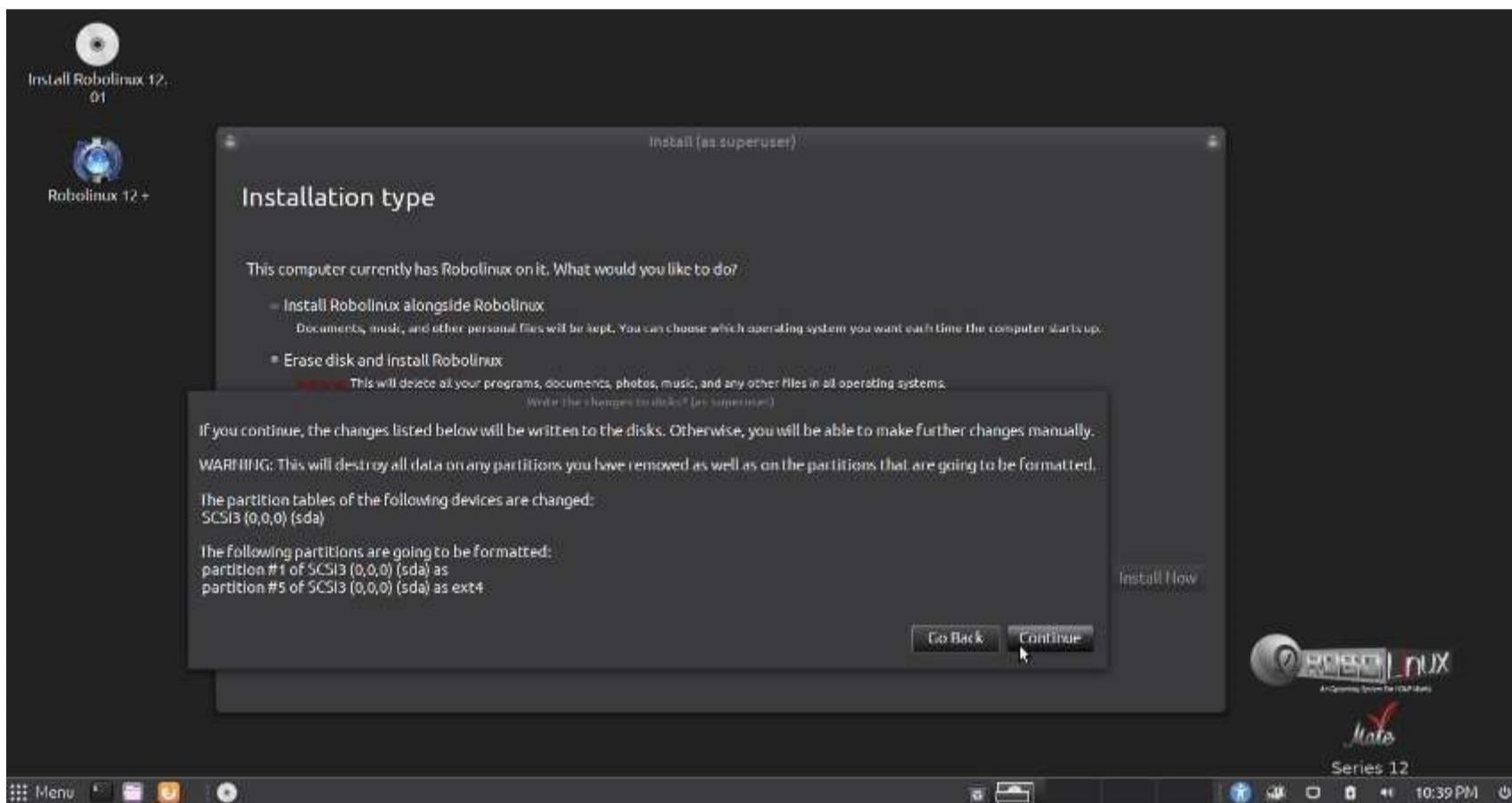
Select your keyboard layout and click on the continue button



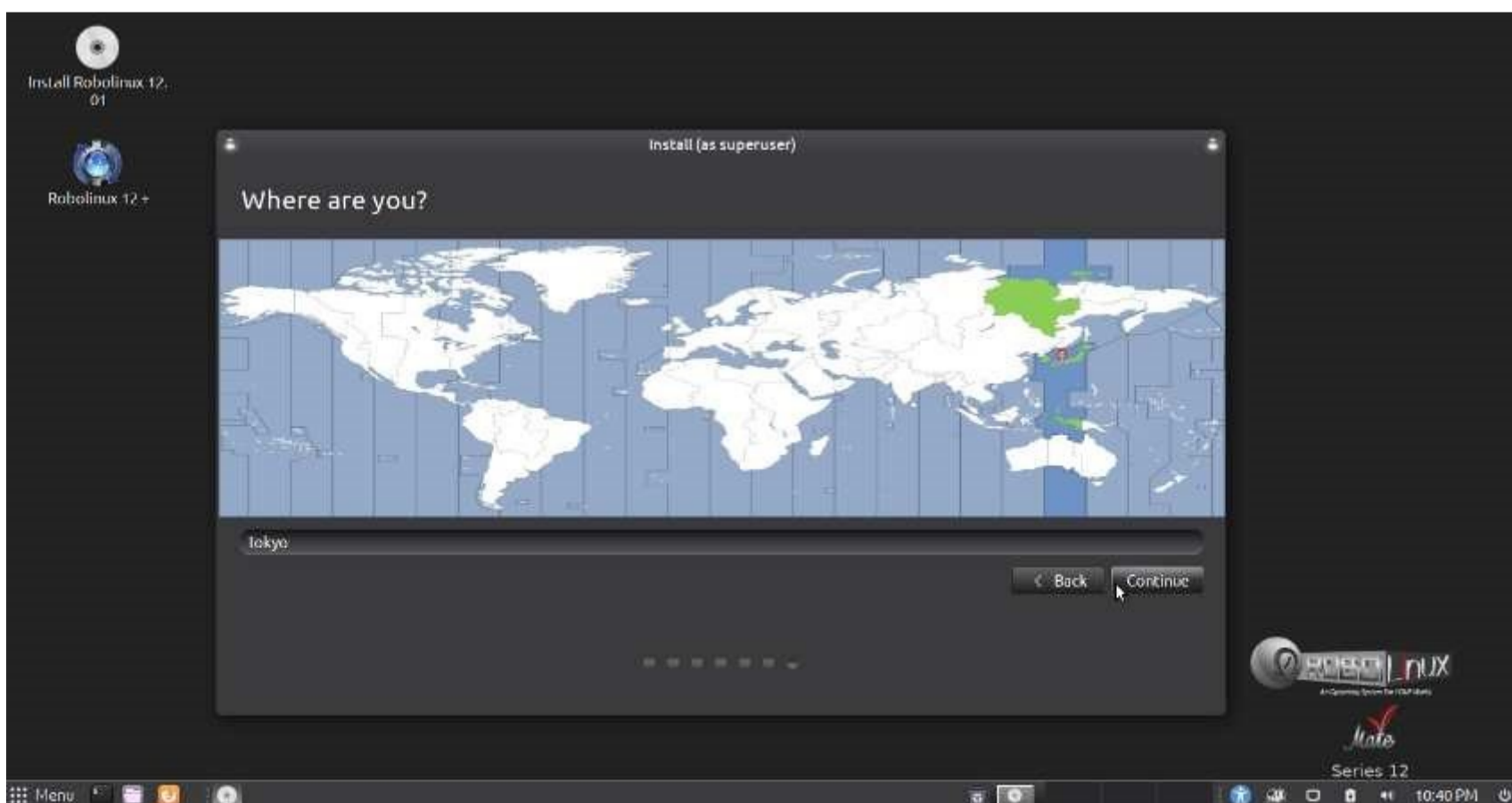
Please note that it is not necessary to select "Install 3rd-party software" as the Robolinux OS already has them in the iso le.



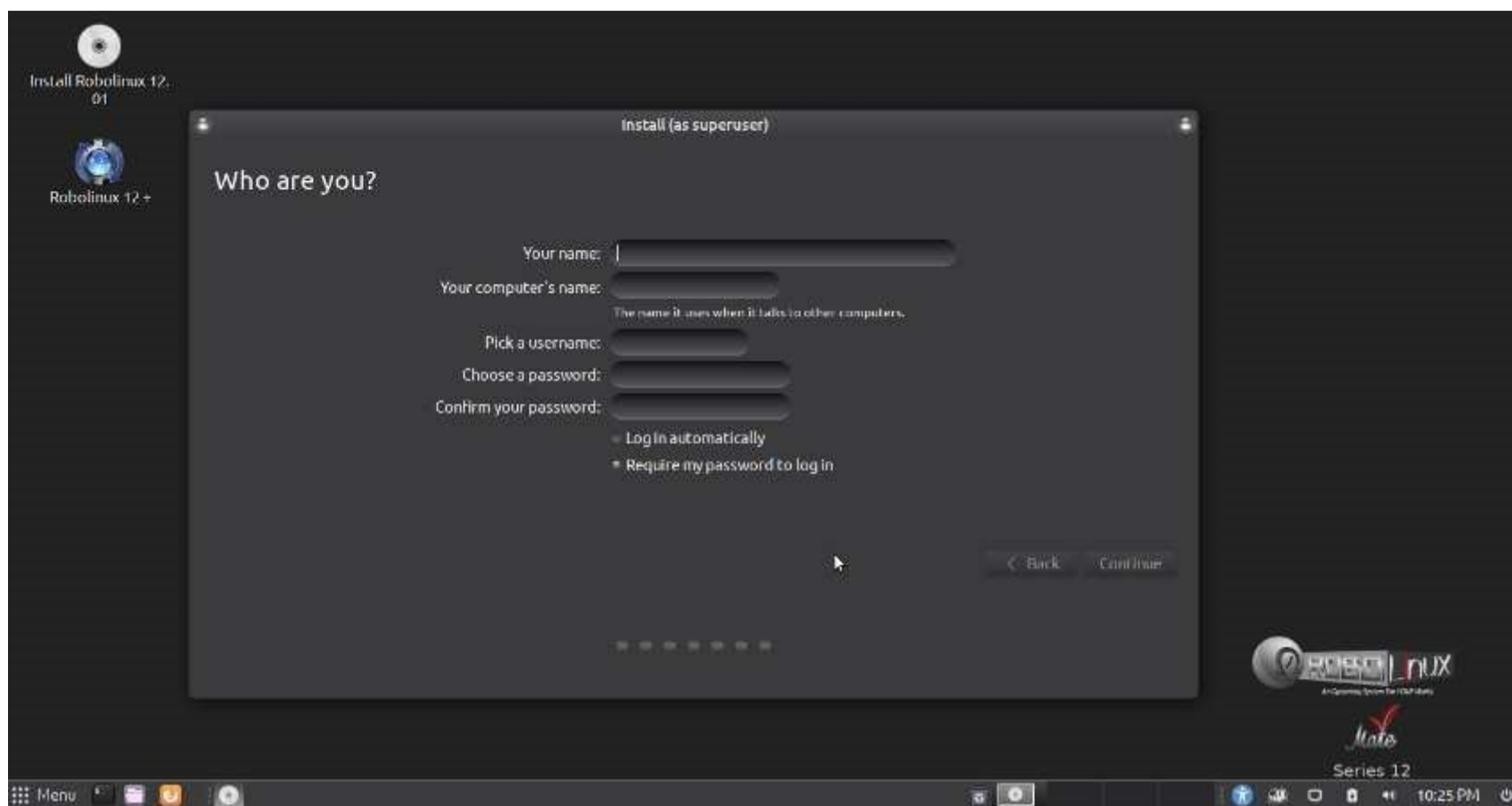
Select your installation type and click on Install Now.



Select your time zone by clicking on the country and city and press the continue button.



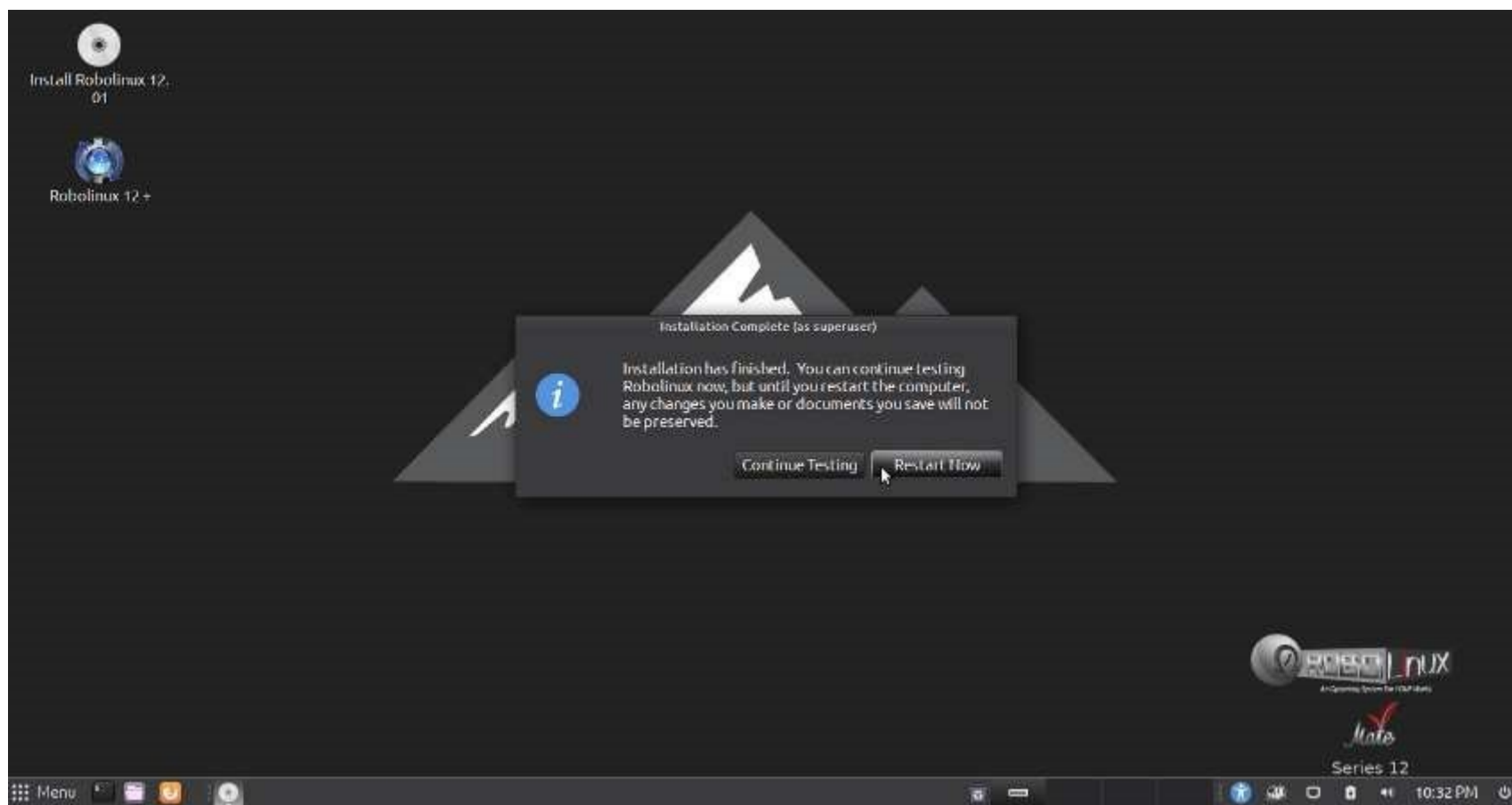
Enter your pertinent information and your password. When you are finished click on Continue.
Be certain to remember or write down your password for future reference.
This will also be your super user password "sudo" for Administrative access.



RoboLinux is now installing. This process is quite fast. Normally just a few minutes.



Congratulations! RoboLinux is now fully installed. It is time to restart your computer.



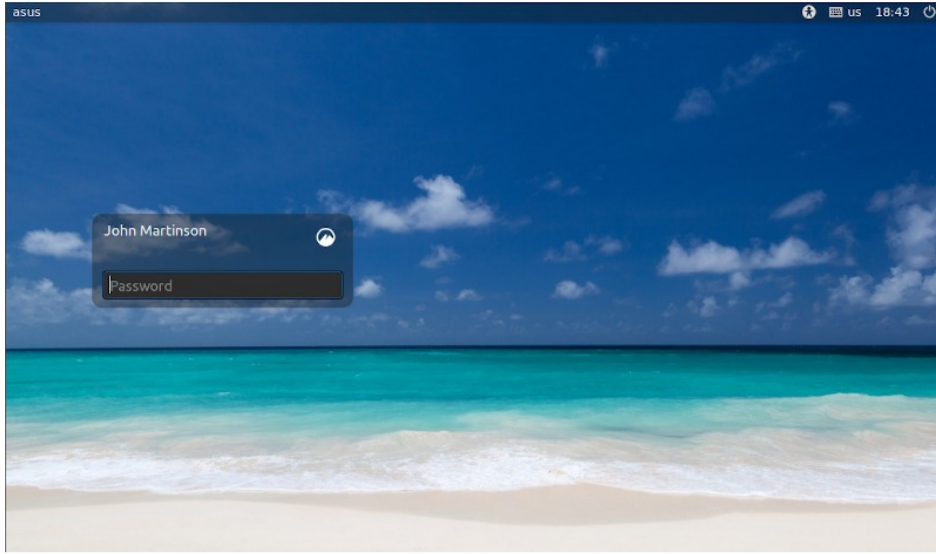
Please remove your DVD or USB stick and press enter.



Here is the Robolinux Grub boot screen for a non UEFI system or with multiple partitions on the hard disk.



Here is the Robolinux User Login screen. If you want to change this login screen then simply use the "Login Window" found at the very bottom of the Settings options in the Mate control center.



Welcome to Robolinux Mate Series 12!
Enjoy the freedom of NEVER being TRACKED again in your life!

